

OCTOBER - DECEMBER 2024 | 9(4) : 2024



Quarterly Bulletin

www.apri.or.id



Monitoring Crab Results from Restocking Stock Increase Activities

Together with researchers from the Smithsonian Environmental Research Center (SERC) carried out activities monitoring every week to see the results of restocking crabs in the seagrass area

Quarterly Bulletin

www.apri.or.id

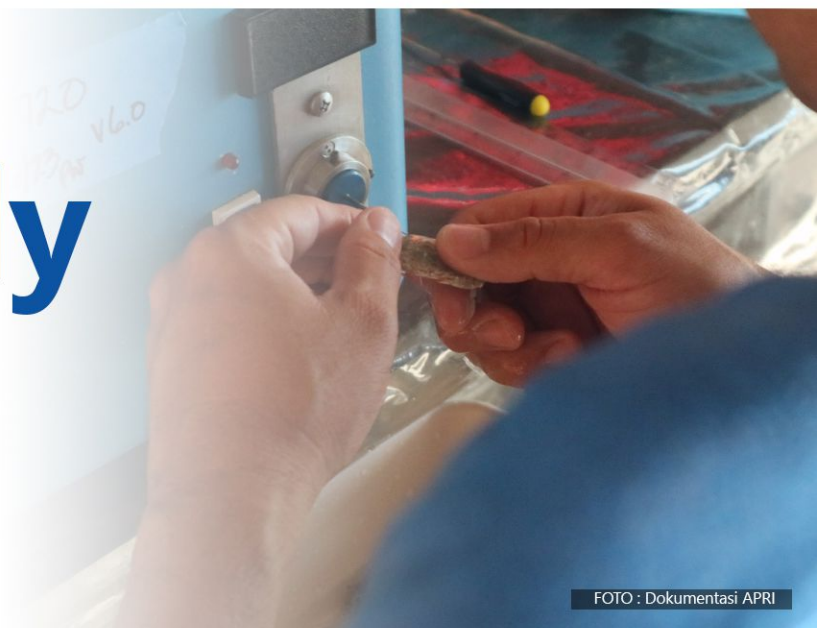


FOTO : Dokumentasi APRI

About APRI

APRI and all members are campaigning sustainability crab harvest to the supply chain for effective impact, increasing crab recruitment through stock enhancement, collaborating with Universities to support scientific research, supporting Ministry of Marine Affairs and Fisheries to develop national Fishery Management Plan and working closely with Fishers community to establish community based fishery management. All project activities are managed in a Fishery Improvement Project (FIP), which determined as 6 FIP stages. Fishery Improvement Project will create sustainable impact to the supply chain, blue swimming crab resources and also to the ecosystem where the blue swimming crab harvested.

APRI Member



APRI 3rd Quarterly Meeting : Increased Stock for Blue Swimming Crab Fisheries in Indonesia

APRI's regular meeting with 20 APRI members who are industry players in the crab processing sector presented several academic speakers related to crab fisheries. The resource person is Prof. Dian Wijayanto, S.Pi., M.M., M.S.E. and Dr. Putut Har Riyadi, S.Pi., M.Si. from Diponegoro University College and Dr. Henry D. Legget, Ph.D from the Smithsonian Environmental Research Center (SERC)

This routine activity also discussed several business-related conditions and programs resulting from monitoring activities carried out at the Situbondo hatchery regarding efforts to increase stocks of crab commodities as well as internal discussions between 20 APRI members at that time.

This activity also presented by Dr. Henry from SERC about the impact of stock enhancement in Situbondo and crab hatchery production with collaboration APRI





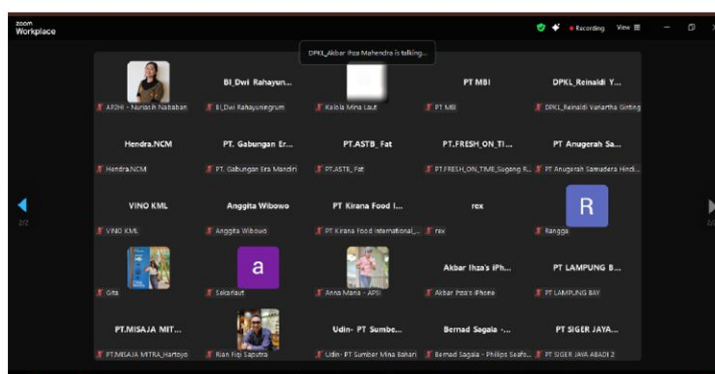
Participated in the Public Consultation on New Regulations for the Export of Fishery Products by (Control and Supervision of the Quality of Marine and Fishery Products) BPPMHKP

Wednesday, 2 October 2024. APRI was also present at the Public Consultation on the Draft Regulation of the Minister of Maritime Affairs and Fisheries concerning the Importation of Fishery Products from the Territory of the Republic of Indonesia

This activity was also attended by APRI members who are actors processing crab fishery products to attend activities organized by BPPMHKP and BKI (Indonesian Quarantine Agency) in Semarang

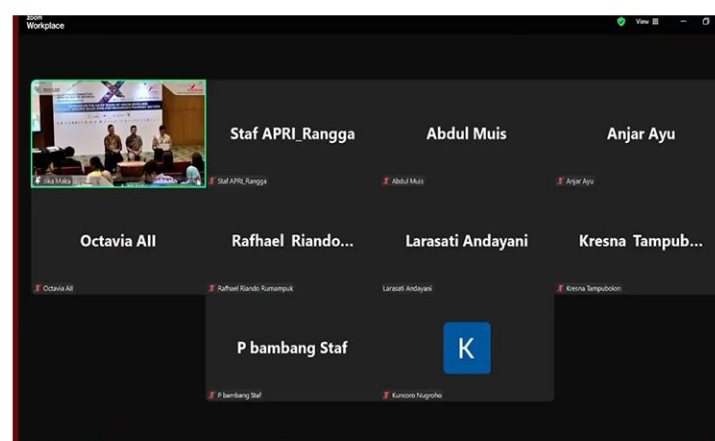
The representative from APRI, namely Mr. Ir. Bambang Arif Nugraha, MBA. was present in person in Semarang in this public discussion activity to be able to bridge and convey several things to APRI members to understand the new regulations in preparing for exports.

BPPMHKP and the Indonesian Quarantine Center or BKI are institutions related to the export of fishery commodities, especially crab commodities.



FGD related to the Implementation of Export Proceeds Foreign Exchange (DHE) PP. No. 36 of 2023 with PDSPKP, Bank Indonesia and APRI.

Monday, September 30 2024. The Indonesian Crab Management Association attended the invitation regarding the implementation of PP no. 36 of 2023 concerning Receiving Foreign Exchange from Exports. APRI together with other associations and APRI members also attended this FGD.



Comprehensive ASEAN-Japan Meeting Discussion Economic Partnership (AJCEP)

The Ministry of Trade invites exporters who want to export to Japan to take advantage of the ASEAN cooperation scheme—Japan Comprehensive Economic Partnership (AJCEP). Exports using the AJCEP scheme have a number of advantages, especially regarding the amount of import duties on certain commodities. This came to the fore in an export seminar to Japan, "Socialization of Increasing Exports through ASEAN—Japan Comprehensive Economic Partnership (AJCEP) in the Context of 50 Years of ASEAN—JAPANESE Cooperation



Stock Increase Activities Smithsonian Environmental Research Team Research Center (SERC) for Monitoring Restocking Results

APRI is trying to answer this challenge by collaborating with Hasanuddin University (UNHAS), the Institute of Marine and Environmental Technology (IMET), and the Smithsonian Environmental Research Center (SERC) to look at innovations in developing and hatching crabs, so that it can be more optimal or the benefits can be felt.

From July to early October, APRI produced thousands of crabs together with Mr. Oded Zmora from the Institute of Marine and Environmental Technology (IMET) accompanied by the APRI team. One of the biggest obstacles to this crab commodity is that crab cannibalism is quite high, making the survival rate (SR) low and the availability of feed which is important for crab growth is also quite high.

In the results of the first week of monitoring activities, around 11 native crabs from nature were obtained and 10 marked crabs were the result of yesterday's restocking.



more on Youtube:





Monitoring Restocking Results for a Month to Knowing the Effectiveness of Restocking Activities



After successfully restocking around 4,900 crabs by tagging the meat near the swimming legs of the crabs, Mr. Henry Legett and Mr. Robert was accompanied by M, Bagus Satria and APRI staff to carry out observations by catching using a modified trap.

The results show that during the first week of monitoring sampling, 10 crabs were obtained from the APRI hatchery restocking results and this continued until early October and consistently found tagged crabs. These results will be studied by the SERC team for conclusions regarding activities to increase stocks in Situbondo waters.



IOP Conference Series conferenceseries.iop.org

Temukan Beberapa Publikasi Menarik Terkait Perikanan Rajungan

Selengkapnya →



13 Research APRI terpubikasi pada IOP Conference Series:
Earth and Environmental Science

APRI Successfully Publish International Publications (IOPScience) Scientific Articles Related to Blue Swimming Crab Fisheries

Find research articles on data collection, conditions, management, and more about the crab fishery.

A total of 13 research articles presented at the International Seminar on Demersal and Crustacean Fisheries Management (ISDCFM) have been published by the IOP Conference Series: Earth and Environmental Science



Scan or visit
publication in
www.apri.or.id

WEBINAR

APRI YOUTH INNOVATION 2024

SABTU, 2 NOVEMBER 2024 08.00 (WIB) - SELESAI

Topik :
Pemanfaatan Pupuk
Cangkang Rajungan
(*Portunus pelagicus*) sebagai
Media Kultur *Chlorella* sp.



TIM - ARIEF MUHAMMAD
Universitas Tidar

Topik :
Optimalisasi Smart Pool
Rajungan Sistem Tunggal
dengan IoT untuk Meningkatkan
Stok Rajungan di Era Industri 5.0



TIM - MARYON BRIAN
Universitas Trunojoyo
Madura

Topik :
Mapping Area Potensial
Ekosistem Mangrove dan
Offshore Sebagai Upaya
Pengelolaan Habitat Rajungan
Di Perairan Pantai Labu,
Sumatera Utara



TIM - MASNIARI N.
Universitas Sumatera
Utara

Topik :
Model Bisnis Berkelanjutan
Berbiaya Rendah untuk Usaha
Kecil-Menengah Melalui
Eksplorasi Ekodisain Proses
Biorefinery Limbah Rajungan

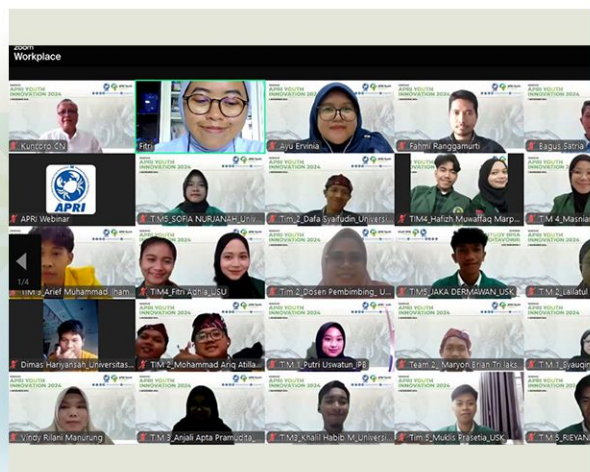


TIM - PUTRI USWATUN
Institut pertanian Bogor

Topik :
Length-based Spawning
Potential Ratio Rajungan
(*Portunus pelagicus*) di
Perairan Kota Langsa dengan
Data Terbatas



TIM - JEKA D.
Universitas Syiah
Kuala



APRI Youth Innovation 2024 Peak Activity Webinar and Awarding Ceremony

Saturday, November 2 2024. APRI Youth Innovation 2024 has finished and closed with a WEBINAR and awards from several participants, the five participants have recorded their names as part of APRI Youth Innovation 2024.

This activity is carried out by conducting an objective assessment and also based on the audience in the team's favorite category. The five teams succeeded in presenting extraordinary presentations so that the webinar participants were enthusiastic for the discussion session.

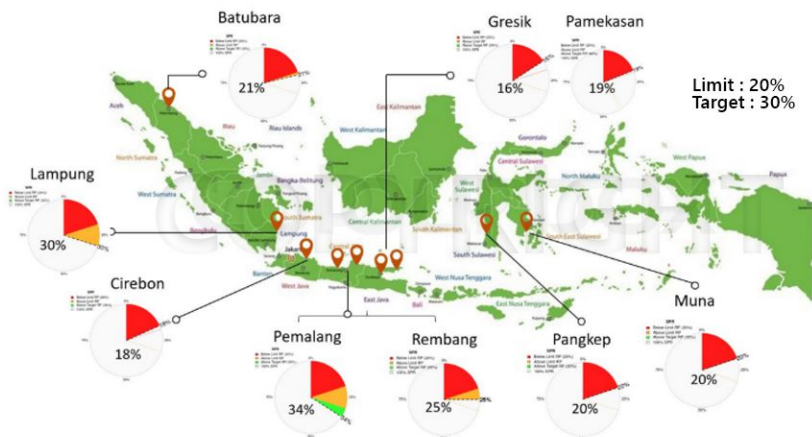
Watch the APRI Youth Innovation 2024 Webinar video on APRI Youtube



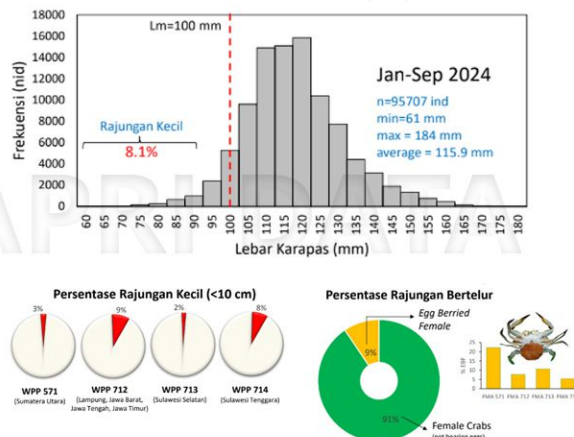


STOCK ASSESMENT

A. Spawning Potential Ratio (SPR)



B. Presentation of Small and Egg Barried Female Crab



Data Analisis oleh APRI - Dr. Ayu Ervinia (JANUARI - SEPTEMBER 2024) © Copyright - Asosiasi Pengelolaan Rajungan Indonesia 2024

(1). The SPR value of crab varies between 16-34% (2). The highest SPR is in Pemalang (Central Java) and Lampung, which reached the SPR reference point target of 30%. (3). Several locations such as Cirebon, Gresik and Pamekasan show SPR values <20%.



FISHERY IMPROVEMENT PROJECT (FIP)

APRI - whose members include more than 30 seafood processing industries - covers more than 85% of crab processing in Indonesia. All members involved work to not only promote sustainable crab fishing, but also a sustainable supply chain.

FIP aims to support scientific research through collaboration with universities, to develop a national Fisheries Management plan through partnership with the Ministry of Maritime Affairs and Fisheries, and to build community-based fisheries management by working with local fishing communities. The FIP is intended to have a long-term impact on the sustainability of the fishery supply chain, the crab resource, and also the ecosystem in which the species is caught.

ENVIRONMENTAL  [View current status](#)

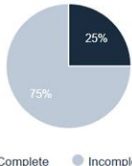
Starting Evaluation: January 01, 2012

86% 14%

Progress
Rating 

A
ADVANCED
PROGRESS

Actions
Complete 



Additional Impacts:

TRACEABILITY  RAN  ECOSYSTEM  BOUNDABLE  OTHER 

SOCIAL 

Risk Assessment  : Not Required

Type  : N/A

Due Date  : -

FIP Objectives

- Implement the FIP work plan and transition Indonesia Blue Swimming Crab Fisheries to full MSC assessment by the end of December 2024.
- Changing practices (no taking small/juvenile crabs, nor spawning crabs), increasing stocks, developing policies that protect and maintain sustainable crabs (including protection of nursery grounds, spawning areas) by the end of December 2024
- Develop a community-based management plan for the Indonesian blue swimming crab that includes community resource management that protects the nursery, communication and awareness, resulting in a control document and an established traceability system by the end of December 2024

1 - Stok ikan yang berkelanjutan

Indikator	Y0	Y1	Y2	Y3	Y4	Y5	Y6	Y7	Y8	Y9
Hasil status stok (1.1.1)										
Hasil pembanguan kembali stok (1.1.2)										
Strategi panen (1.2.1)										
Aliran & alat penendalian panen (1.2.2)										
Informasi & pemantauan strategi penanaman (1.2.3)										
Penilaian status stok (1.2.4)										

2 - Meminimalkan dampak lingkungan

Indikator	Y0	Y1	Y2	Y3	Y4	Y5	Y6	Y7	Y8	Y9
Hasil spesies ormer (2.1.1)										
Pemantauan spesies ormer (2.1.2)										
Informasi spesies ormer (2.1.3)										
Hasil spesies sekunder (2.2.1)										
Pemantauan spesies sekunder (2.2.2)										
Informasi spesies sekunder (2.2.3)										
Hasil spesies ETP (2.3.1)										
Pemantauan spesies ETP (2.3.2)										
Informasi spesies ETP (2.3.3)										
Hasil habitat (2.4.1)										
Pemantauan habitat (2.4.2)										
Informasi habitat (2.4.3)										
Hasil ekosistem (2.5.1)										
Pemantauan ekosistem (2.5.2)										
Informasi ekosistem (2.5.3)										

3 - Manajemen yang efektif

Indikator	Y0	Y1	Y2	Y3	Y4	Y5	Y6	Y7	Y8	Y9
Kerangka hukum/adat (3.1.1)										
Konsultasi, peran & tanggung jawab (3.1.2)										
Tujuan jangka panjang serta kelolaan (3.1.3)										
Tujuan khusus: perikanan (3.2.1)										
Proses pengambilan keputusan (3.2.2)										
Kepatuhan & pemantauan hukum (3.2.3)										
Pemantauan & evaluasi kinerja pemantauan (3.2.4)										

Scoring Range  0-100  0-100  0-100

Not addressed by this FIP

Year scored using MSC Version 3

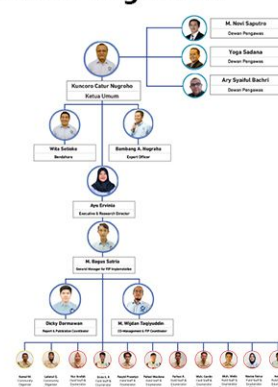
Click to see why an indicator is not being addressed

Click to see the 0-60 score (if available)

There has been progress within the 0-60 scoring level

There has been a setback within the 0-60 scoring level

Struktur Organisasi



Selengkapnya tentang
FIP APRI

FISHERYPROGRESS.ORG

Fishery Improvement Project
Progress Tracking Database & Tools



Scan untuk **Download PDF !**



ASOSIASI PENGELOLAAN RAJUNGAN INDONESIA

Jl. Dukuh Kupang Timur XI No. 33, Surabaya, Jawa Timur, Indonesia

 : rajunganindonesia@gmail.com     | [@rajunganindonesia](https://www.instagram.com/rajunganindonesia) |  www.apri.or.id