

JULY - SEPTEMBER 2024 | 8(3) : 2024



Quarterly Bulletin

www.apri.or.id



Blue Swimming Crab Management Meeting In Southeast Sulawesi Province

APRI carries out meetings with several stakeholders in Southeast Sulawesi Province. This activity is a form of implementation management of collaboration with the government as policy maker.

Quarterly Bulletin

www.apri.or.id



Photo : Documentation of APRI

About APRI

APRI and all members are campaigning sustainability crab harvest to the supply chain for effective impact, increasing crab recruitment through stock enhancement, collaborating with Universities to support scientific research, supporting Ministry of Marine Affairs and Fisheries to develop national Fishery Management Plan and working closely with Fishers community to establish community based fishery management. All project activities are managed in a Fishery Improvement Project (FIP), which determined as 6 FIP stages. Fishery Improvement Project will create sustainable impact to the supply chain, blue swimming crab resources and also to the ecosystem where the blue swimming crab harvested.

APRI Members

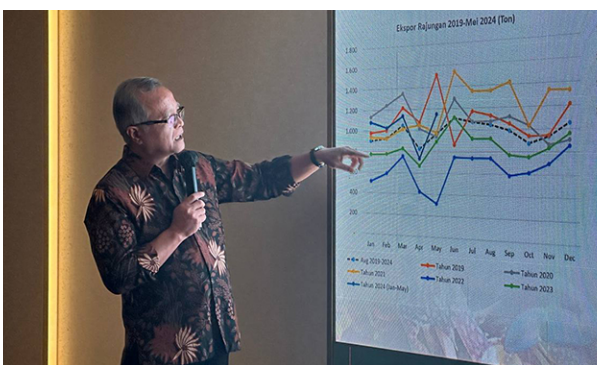


APRI 2nd Quarterly Meeting : BSC Fishery and Business Conditions on First Semester

Saturday, June 29 2024. APRI's conduct regular meeting with 20 APRI members who are industrialists in the crab processing sector and also attended by the Ministry of Investment / Investment Coordinating Board (BKPM) and the Institute for Development of Economics and Finance (INDEF).

The presence of BKPM and INDEF at this meeting was also to discuss the potential of crab fisheries in Indonesia, which is one of the high-value fishery commodities.

Apart from this potential, this activity also provides information about FIP developments starting from stock assessments to APRI activities. This meeting was also to prepare for crab stock enhancement activities with researchers from the United States, namely the Smithsonian Environmental Research Center (SERC) and Institute of Marine and Environmental Technology (IMET).





Blue Swimming Crab Management Meeting in Southeast Sulawesi

Monday, July 8 2028. In an effort to continue to improve crab management, especially in the Southeast Sulawesi region which has the potential for crab fisheries in 714 FMA APRI again held a meeting in collaboration with the Southeast Sulawesi Provincial Agency of Marine Affairs and Fisheries in the city of Kendari.

This meeting was attended by several heads of city and regional departments who came directly as well as other government agencies who also play a role in this crab commodity, such as the Marine and Fishery Products Quality Control and Supervision Agency (BPPMHKP), Haluoleo University Academics, Polytechnics, Business Actors , Miniplant Representative.

This meeting also discussed the action plan for crab management in Southeast Sulawesi Province which was prepared based on input from stakeholders who attended the crab management meeting in Southeast Sulawesi Province.

Synergy and Collaboration in Crab Management Together with the Provincial Maritime Affairs and Fisheries Agency Southeast Sulawesi

Tuesday, July 9 2028. APRI visited the Southeast Sulawesi Province Maritime and Fisheries Agency to approve activities in the blue swimming crab management action plan in Southeast Sulawesi Province.

In this meeting APRI was with Mrs. Yenni Buraera S.Pi, M.Si as Head of the Cupture Fisheries Departement of the Southeast Sulawesi Province Agency of Marine Affairs and Fisheries is planning an action plan for the management of crab in Southeast Sulawesi Province and communicating potential crab crab locations that can be used as pilot projects





Handover Vessels Registration Document to 13 Fishermen in Pamekasan

July 3 2024. Handover of Small PAS Documents to 13 Fishermen in Pamekasan by Marine and Fisheries Agency in Pamekasan with APRI

Several fishermen's wives represented the submission of vessels registration by Fisheries Agency of Pamekasan and were accompanied by APRI, this document has many benefits, especially for small crab fishermen.

According to Lailatul Q., assisting PAS KECIL is very important to make things easier for small fishermen and the role of the government and related agencies is also very cooperative.



Restocking and Planning Stock Enhancement Activities Together with Smithsonian and IMET Research Team in Situbondo, East Java

July 23, 2024. Presence of Dr. Oded Zamora in a series of stock enhancement activities in Situbondo waters, East Java. His arrival was at the beginning to see and prepare several things to help with crablet production activities at the Situbondo crablet hatchery. It is hoped that the arrival of natural food experts from the United States over the past two months will be able to increase the crablet production capacity for future crablet restocking activities using tagging to determine the effectiveness of restocking activities in increasing crab stock. The arrival of researchers from IMET looked at the conditions and carried out crablet production for tagging.





Thousands of Crab Crablet are Tagged and Released For Stock Enhancement Activities



29-31 August 2024, After crablet production activities, APRI has released around 4,900 crablets which were successfully tagged using equipment from the Smithsonian Environmental Research Center (SERC). This restocking activity is carried out in the Seagrass area which is expected to provide shelter and provide natural nutritional food.



This activity will continue to be monitored to find out whether the crabs that we released are able to enhance the wild stock through recapturing them using modified traps and scanned them using metal detector.





Focus Group Discussion (FGD) Activities Regarding Statistical Data Collection for Capture Fisheries by MMAF

Bogor, 29-31 August 2024. FGD activities in the context of strengthening data collection and improving the quality of capture fisheries statistical data. This activity was attended by several associations including APRI through the Chairman of APRI, namely Mr. Ir. Kuncoro Catur Nugroho, M.M together with Research and Executive Director of APRI, namely Mrs. Dr. Ayu Ervinia attended an important discussion to discuss together regarding e-logbook data collection.



APRI Join at the Fisheries Statistics Data Collection Meeting 2024 Regarding Strengthening Fisheries Statistical Data

Bogor, 20 September 2024. Taking place face to face in Bogor, Dr. Ayu Ervinia as Research and Executive Director of APRI was present at the data collection meeting for fisheries stakeholders in 2024.

One of the main data sources is the total production or value of crab commodity products which can be collected through associations and stakeholders so that associations have an important role in efforts to strengthen data in one data.

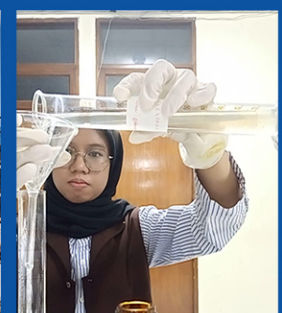


APRI Youth Innovation 2024 Research Activities

Surabaya, 26 September 2024. The research activities of the APRI Youth Innovation team participants have been completed and the final report has been compiled which they will present at the APRI Youth Innovation 2024 Webinar in October.

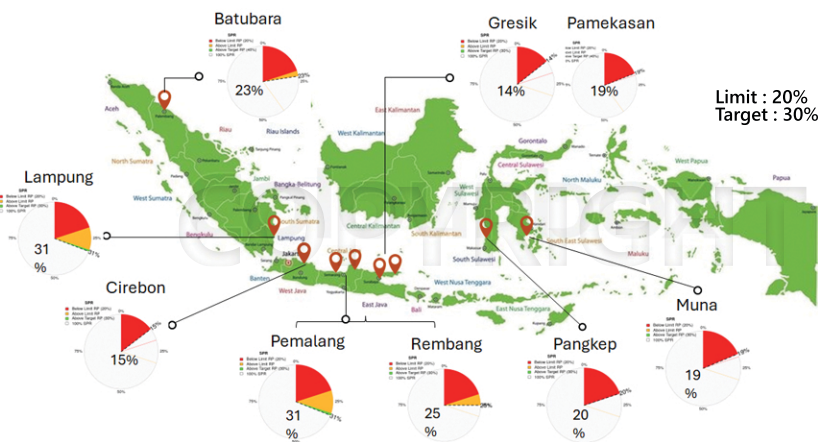
In the fifth year of the APRI Youth Innovation event, 5 teams from 5 universities competed and presented their ideas. The five universities are Trunojoyo Madura University, IPB University, Tidar University, North Sumatra University and Syiah Kuala University.

No.	Ketua Tim	Universitas	Judul Proposal
1	Maryon Brian Tri Laksono	Universitas Trunojoyo Madura	Optimalisasi Smart Pool Rajungan Sistem Tunggal Dengan Iot Untuk Meningkatkan Stok Rajungan Di Era Industri 5.0
2	Putri Uswatun Hasanah	IPB University	Model Bisnis Berkelanjutan Berbiaya Rendah Untuk Usaha Kecil-Menengah Melalui Eksplorasi Ekodesain Proses Biorefinery Limbah Rajungan
3	Masniari Nasution	Universitas Sumatera Utara	Mapping Area Potensial Ekosistem Mangrove Dan Offshore Sebagai Upaya Pengelolaan Habitat Rajungan Di Perairan Pantai Labu, Sumatera Utara.
4	Jaka Dermawan	Universitas Syiah Kuala	Length-Based Spawning Potential Ratio Rajungan Portunus Pelagicus Di Perairan Kota Langsa Dengan Data Terbatas
5	Arief Muhammad Ilham	Universitas Tidar	Pemanfaatan Pupuk Cangkang Rajungan (Portunus Pelagicus) Sebagai Media Kultur Chlorella Sp.

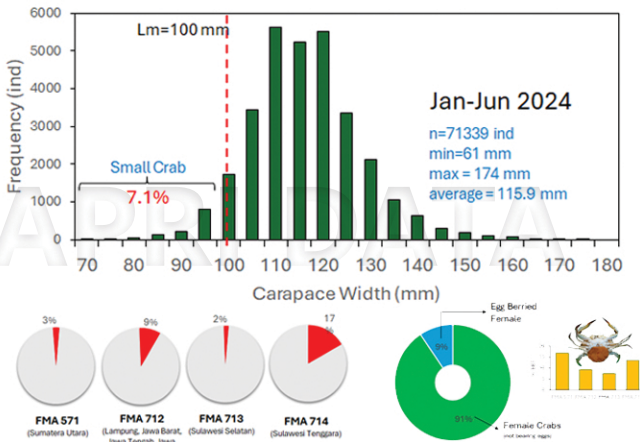


STOCK ASSESSMENT

A. Spawning Potential Ratio (SPR)



B. Presentation of Small Crab and Egg Barried Female



Data Analysis by APRI - Dr. Ayu Ervinia (JANUARY - JUNE 2024) © Copyright - Asosiasi Pengelolaan Rajungan Indonesia 2024

(1). The size of captured crabs in Indonesia varies from 61-174 mm, with an average of 115.9 mm. (2). The percentage of small crabs caught in 2024 is around 7.1%, highest in Southeast Sulawesi (FMA 714) at 17%. (3). The percentage of egg-bearing crabs caught in 2024 is 9%.

FISHERY IMPROVEMENT PROJECT (FIP)

APRI - whose members cover more than 30 seafood processing industries - accounts for more than 85% of crab processing in Indonesia. All members involved work to not only promote sustainable crab fishing, but also sustainable supply chains. FIP aims to support scientific research through collaboration with universities, to develop a national Fisheries Management plan in partnership with the Ministry of Marine Affairs and Fisheries, and to establish community-based fisheries management in collaboration with local fishing communities. FIPs are intended to have a long-term impact on the sustainability of the fishery supply chain, blue crab resources, as well as the ecosystems where these species are caught.

FIP OBJECTIVES

- Implement the FIP work plan and transition Indonesia Blue Swimming Crab Fisheries to full MSC assessment by the end of December 2024.
- Changing practices (no taking small/juvenile crabs, nor spawning crabs), increasing stocks, developing policies that protect and maintain sustainable crabs (including protection of nursery grounds, spawning areas) by the end of December 2024
- Develop a community-based management plan for the Indonesian blue swimming crab that includes community resource management that protects the nursery, communication and awareness, resulting in a control document and an established traceability system by the end of December 2024

1 - Sustainable fish stocks

Indicator	Y0	Y1	Y2	Y3	Y4	Y5	Y6	Y7	Y8
Stock status outcome (1.1.1)	Red	Red	Red	Red	Red	Red	Red	Red	Red
Stock rebuilding outcome (1.1.2)	Red	Red	Red	Red	Red	Red	Red	Red	Red
Harvest strategy (1.2.1)	Red	Red	Red	Red	Red	Red	Red	Red	Red
Harvest control of rules & tools (1.2.2)	Red	Red	Red	Red	Red	Red	Red	Red	Red
Harvest strategy information & monitoring (1.2.3)	Red	Red	Red	Red	Red	Red	Red	Red	Red
Assessment of stock status (1.2.4)	Red	Red	Red	Red	Red	Red	Red	Red	Red

2 - Minimizing environmental impact

Indicator	Y0	Y1	Y2	Y3	Y4	Y5	Y6	Y7	Y8
Primary species outcome (2.1.1)	Red	Red	Red	Red	Red	Red	Red	Red	Red
Primary species management (2.1.2)	Red	Red	Red	Red	Red	Red	Red	Red	Red
Primary species information (2.1.3)	Red	Red	Red	Red	Red	Red	Red	Red	Red
Secondary species outcome (2.2.1)	Red	Red	Red	Red	Red	Red	Red	Red	Red
Secondary species management (2.2.2)	Red	Red	Red	Red	Red	Red	Red	Red	Red
Secondary species information (2.2.3)	Red	Red	Red	Red	Red	Red	Red	Red	Red
ETP species outcome (2.3.1)	Red	Red	Red	Red	Red	Red	Red	Red	Red
ETP species management (2.3.2)	Red	Red	Red	Red	Red	Red	Red	Red	Red
ETP species information (2.3.3)	Red	Red	Red	Red	Red	Red	Red	Red	Red
Habitat outcome (2.4.1)	Red	Red	Red	Red	Red	Red	Red	Red	Red
Habitat management (2.4.2)	Red	Red	Red	Red	Red	Red	Red	Red	Red
Habitat information (2.4.3)	Red	Red	Red	Red	Red	Red	Red	Red	Red
Ecosystem outcome (2.5.1)	Red	Red	Red	Red	Red	Red	Red	Red	Red
Ecosystem management (2.5.2)	Red	Red	Red	Red	Red	Red	Red	Red	Red
Ecosystem information (2.5.3)	Red	Red	Red	Red	Red	Red	Red	Red	Red

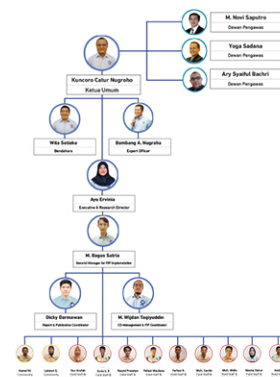
3 - Effective management

Indicator	Y0	Y1	Y2	Y3	Y4	Y5	Y6	Y7	Y8
Legal/customary framework (3.1.1)	Red	Red	Red	Red	Red	Red	Red	Red	Red
Consultation, roles & responsibilities (3.1.2)	Red	Red	Red	Red	Red	Red	Red	Red	Red
Governance/policy long-term objectives (3.1.3)	Red	Red	Red	Red	Red	Red	Red	Red	Red
Fishery-specific objectives (3.2.1)	Red	Red	Red	Red	Red	Red	Red	Red	Red
Decision-making processes (3.2.2)	Red	Red	Red	Red	Red	Red	Red	Red	Red
Compliance & enforcement (3.2.3)	Red	Red	Red	Red	Red	Red	Red	Red	Red
Monitoring & management performance evaluation (3.2.4)	Red	Red	Red	Red	Red	Red	Red	Red	Red

Scoring Range: 0-100 (0-25) (26-50) (51-75) (76-100)

- Not addressed by this FIP
- Year scored using MSC Version 3
- Click to see why an indicator is not being addressed
- Click to see the 0-60 score (if available)
- There has been progress within the 0-60 scoring level
- There has been a setback within the 0-60 scoring level

Organization Structure



More about APRI FIP

FISHERYPROGRESS.ORG Fishery Improvement Project Progress Tracking Database & Tools

APRI Members



Scan untuk **Download PDF** !



INDONESIAN BLUE SWIMMING CRAB ASSOCIATION

Jl. Dukuh Kupang Timur XI No. 33, Surabaya, East Java, Indonesia

: rajunganindonesia@gmail.com | [@rajunganindonesia](https://www.instagram.com/rajunganindonesia) | www.apri.or.id