



January - March 2022 | 6(1) : 2022

# Quarterly Bulletin

[www.apri.or.id](http://www.apri.or.id)



**13-15**

JANUARY

## NFI Crab Council Annual Meeting Activities In Boston, America

APRI was represented by Mr.. Wita Setiyoko on a visit to Boston, United States

# Quarterly Bulletin

[www.apri.or.id](http://www.apri.or.id)



FOTO : CARDIN - PAMANDATI

## About APRI

APRI and all members are campaigning sustainability crab harvest to the supply chain for effective impact, increasing crab recruitment through stock enhancement, collaborating with Universities to support scientific research, supporting Ministry of Marine Affairs and Fisheries to develop national Fishery Management Plan and working closely with Fishers community to establish community based fishery management. All project activities are managed in a Fishery Improvement Project (FIP), which determined as 6 FIP stages. Fishery Improvement Project will create sustainable impact to the supply chain, blue swimming crab resources and also to the ecosystem where the blue swimming crab harvested.

## APRI Members



## Cooperation Discussion Meeting with Work Partners by DJPT-MMAF

APRI Also Attended the Cooperation Discussion Meeting with Partners by the DJPT-KKP on Wednesday, January 19, 2022 through online and offline APRI was also present in the discussion of cooperation. This activity also discusses measurable fisheries programs and advanced fishing village programs. On this occasion, partners were asked to present related and integrated programs. The activity was attended offline by Azhar Slamet and Widjan Taqiyuddin as APRI staff.

## APRI Board - MSC - Marine and Fisheries Bureau of East Java Province (DKP)

The activities carried out at the East Java Marine and Fisheries Bureau (DKP) were warmly welcomed by the Head of the East Java Marine and Fisheries Service, Mrs. Dr. Ir. Dyah Wahyu Ermawati, MA. East Java is one of the provinces with the highest exports for this crab commodity, so APRI held joint discussions for a synergy program for sustainable management of crab fisheries such as data collection by enumerators and integration of the APRI Datacenter, crab apartments, small PAS measurements, environmentally friendly fishing gear, and the feasibility of miniplants.

Mrs. Dr. Ir. Dyah Wahyu Ermawati, MA in the discussion said that he strongly supports the existence of international ecolabel certified crab fisheries management.



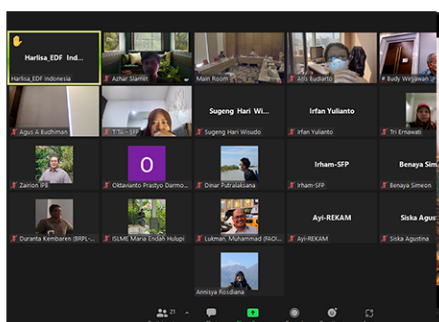
Foto : Dokumentasi APRI





## APRI Holds Trial Training Crab Cultivation in Pagagan Village Pamekasan.

January 31, 2022, together with BBPBAP Jepara as a resource person gave a presentation regarding the hatchery and enlargement of crabs. This activity is also supported by the Department of Marine and Fisheries of East Java and Pamekasan Regency in an effort to support sustainable crab fisheries and the welfare of crab fishermen.



## FGD Data Collection Effectiveness BSC Fishing in Demak, Central Java

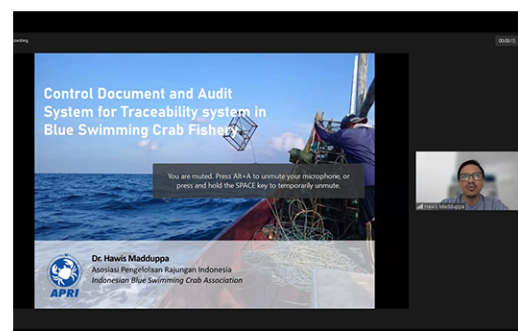
February 11, 2022, The importance of data collection on sustainable fisheries management is very important. APRI will continue to be committed to collecting data on crab fisheries through APRI enumerators spread across most of Indonesia. This data collection will continue to be carried out and improved as long as the crab commodity is still available.



## Discussion Meeting Export-Import of Fishery Products Indonesia and Tunisia

Bogor, 11 February 2022. APRI attended the discussion on the export and import of fishery products, one of which was crab. This activity is also an effort to strengthen the competitiveness of Indonesian fishery products.

*Portunus Pelagicus* this commodity has become a leading fishery product for a decade and has entered the top 5 leading export commodities.



## Discussion about STELINA on BSC Commodity together APRI - MMAF

17 February 2022, Discussion Activities on the National Fish Traceability and Logistics System (STELINA) for Crayfish Commodities.

APRI is ready to collaborate in STELINA as a "Traceability System" for crab fisheries in Indonesia. APRI strongly supports matters related to traceability in accordance with APRI's tagline, namely Sustainable & Traceable.



## APRI Accompanies MSC's Indonesian MonEv Team Visit in Pamekasan, East Java

9-10 February 2022. For two days For two days APRI participated in the MonEv MSC Indonesia activities from the KKP and the TPOA Team. The activity began with a meeting with fisheries management stakeholders at the East Java Marine and Fisheries Service. This activity is to assess the benefits of cooperation for related stakeholders.

The next activity was a field visit to Pamekasan, this activity was to monitor and explore the progress of MSC activities that have been implemented in East Java with APRI.



## APRI Participates in NFI CC Annual Activities Meeting in Boston America

March 13-15, 2022 coincides with the BOSTON Seafood Expo in Boston, America. APRI Representative Mr. Wita Setioko attended the NFI CC Annual Meeting where APRI's work program in the management of APRI's crab fishery was explained.



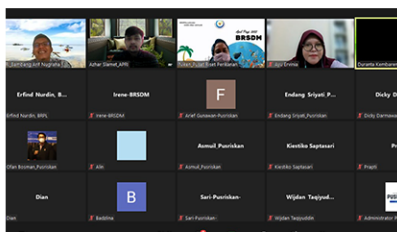
## Discussion of Fishery Stakeholder Data By DJPT-MMAF

Thursday, February 24, 2022. Dr. Hawis Maduppa as the Executive Director of APRI explained related to the data collection on crab fisheries conducted by APRI. "One of APRI's focuses is data collection, where APRI has routinely collected data since 2014.



## Draft BSC Discussion (RPP) at WPPNRI

On 17-18 February, APRI participated in the discussion on the draft of the crab fishery management plan (RPP) at WPPNRI. Ayu Ervinia and Azhar Slamet as representatives of APRI attended the meeting to discuss this draft in Bogor and online.



## Discussion Regarding the Cooperation Proposal APRI - PUSRIKAN

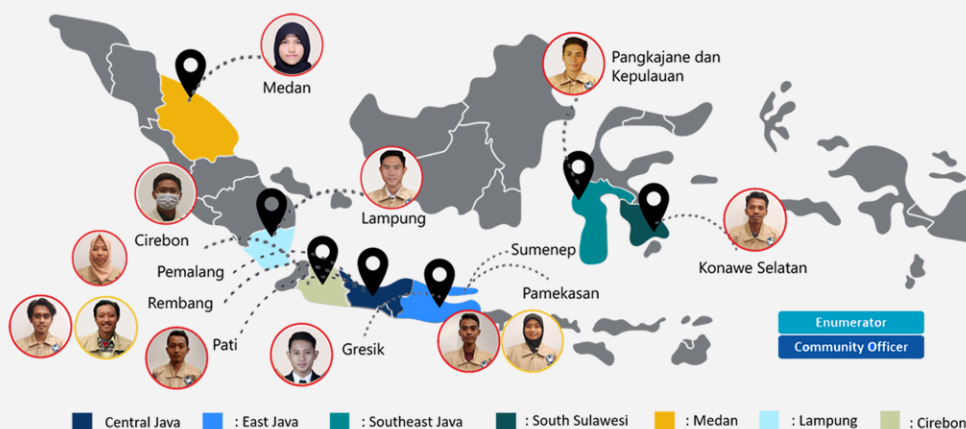
Tuesday, March 8, 2022. This activity is a follow-up activity after the APRI, BRSDM, PUSRIKAN, and BRPL meetings in Jakarta in December. This activity discussed the cooperation between APRI and PUSRIKAN regarding the technical crab seminar.

Bambang Arif Nugraha as General Manager of APRI explained APRI's programs in 2021 and the activities that will be carried out by APRI in 2022.



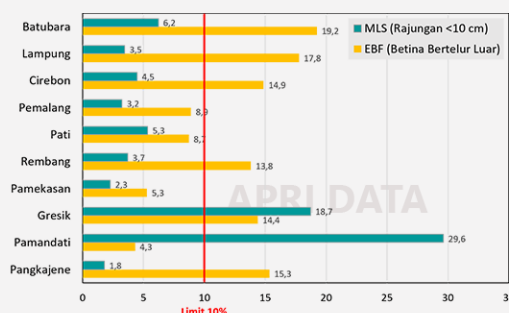
## STOCK ASSESSMENT

### Spatial Distribution of Crab Sampling



### MLS, EBF, and SPR percentages

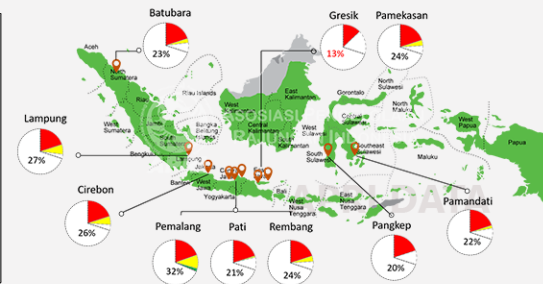
#### A. Small Crab Presentation and Egg Berried Female



-Most of the small crabs are not caught except in **Gresik** and **Pamandati** areas  
-**Pemalang, Pati and Pamekasan** areas have a **low EBF percentage**

\*Ayu Ervinia APRI Data Analyst January - March 2022

#### B. Spawning Potential Ratio



-Most of the SPR Rajungan values in Indonesia are above the reference point for SPR20% recruitment rate, except **Gresik**  
-The **Pemalang** area **reached** the target reference point of SPR30%.  
-The status of the crab stock in Indonesia **has improved** during 2015-2021 period.





## FISHERY IMPROVEMENT PROJECT (FIP)

The organization APRI - whose members include over 30 seafood industry businesses and processors - covers more than 85% of purchased crab in Indonesia. All members involved are working to promote not only sustainable crab harvest, but a sustainable supply chain as well. The FIP aims to support scientific research through collaborations with universities, to develop a national Fishery Management plan through a partnership with the Ministry of Marine Affairs and Fisheries, and to establish community based fishery management by working with local fishing communities. The FIP is meant to have a lasting impact on the sustainability of the fishery's supply chain, on blue swimming crab resources, and also on the ecosystem where the species is harvested.

## FIP Objective(s)

- Work plan and transition Indonesia Blue Swimming Crab Fisheries to MSC full assessment within the prescribed 3-years
- Change practices (no take of small crabs/juveniles, no take of eggbearing females), increase the stocks, develop policies that protect and sustain crabs (including protection of nursery ground, spawning area) by end of December 2022
- Develop a management plan for Indonesian blue swimming crab that includes community resources management that protects nursery ground; produce a control document by end of December 2018
- Implement FIP workplan that includes development of the management plan, community-based management, communication and awareness, nursery and spawning grounds protection projects, as well as a hatchery project by end of December 2018

## FIP at Glance

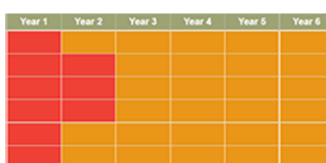
The FIP currently at **SFP Stage 5 : Improvements on the Water** – and Progress Rating got A (Advanced Progress)

The blue swimming crab fisheries has been assessed in 2015 using the MSC's Fishery Assessment Methodology (V2.0). **Current score SG<72** MSC's standard for sustainable blue swimming crab fisheries



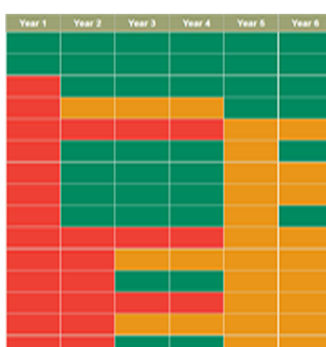
### P1. Sustainable Fish Stock

- Stock status outcome (1.1.1)
- Stock rebuilding outcome (1.1.2)
- Harvest strategy (1.2.1)
- Harvest control rules & tools (1.2.2)
- Harvest strategy information & monitoring (1.2.3)
- Assessment of stock status (1.2.4)



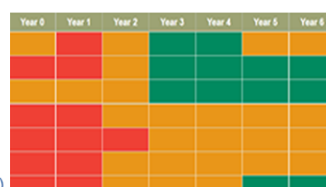
### P2. Minimizing Environmental

- Primary species outcome (2.1.1)
- Primary species management (2.1.2)
- Primary species information (2.1.3)
- Secondary species outcome (2.2.1)
- Secondary species management (2.2.2)
- Secondary species information (2.2.3)
- ETP species outcome (2.3.1)
- ETP species management (2.3.2)
- ETP species information (2.3.3)
- Habitat outcome (2.4.1)
- Habitat management (2.4.2)
- Habitat information (2.4.3)
- Ecosystem outcome (2.5.1)
- Ecosystem management (2.5.2)
- Ecosystem information (2.5.3)



### P3. Effective Management

- Legal/customary framework (3.1.1)
- Consultation, roles & responsibilities (3.1.2)
- Governance/policy long-term objectives (3.1.3)
- Fishery-specific objectives (3.2.1)
- Decision-making processes (3.2.2)
- Compliance & enforcement (3.2.3)
- Monitoring & management performance evaluation (3.2.4)



## APRI BOARD

### Supervisory Board :

- Chief Supervisor** : Mohammad Novi Saputro
- Member** : Yoga Sadana
- Member** : Ary Syaiful Bachri

- Chairman** : Kuncoro Catur Nugroho
- Treasurer** : Wita Setioko

### FIP Organization (Fishery Improvement Project) :

- Executive Director** : Dr. Hawis Madduppa, S.Pi, M.Si.
- General Manager** : Bambang Arif Nugraha
- Project Support I** : Bunga M. Tarigan (WPP 711)
- Project Support II** : Waanto (WPP 712)
- Project Support III** : Hendro Wibowo (WPP 713, 714, 718)

### Staff

- Office & Data Management** - M. Wijdan Taqiyuddin
- Fishery progress & Public Relations** - Mohamad Bagus Satria
- Science & Data Analyst** - Ayu Ervinia
- CO-Management & FIP program** - Azhar Slamet
- Public Awareness & Media Communication** - Dicky Darmawan



**Support environmentally friendly fishing gear  
APRI implementing the 4.5 Inch  
Gillnet program**



# Milestone APRI Partners 2014-2021



**2021**



**2020**



**2019**



**2018**



**2017**



**2016**



**2015**



**P4KSI**

**2014**



Scan for **Download PDF !**



**Indonesian Blue Swimming Crab Association**  
Jl. Dukuh Kupang Timur XI No. 33, Surabaya, East Java, Indonesia

 : [rajunganindonesia@gmail.com](mailto:rajunganindonesia@gmail.com)     | [@rajunganindonesia](https://www.instagram.com/rajunganindonesia) |  [www.apri.or.id](http://www.apri.or.id)