

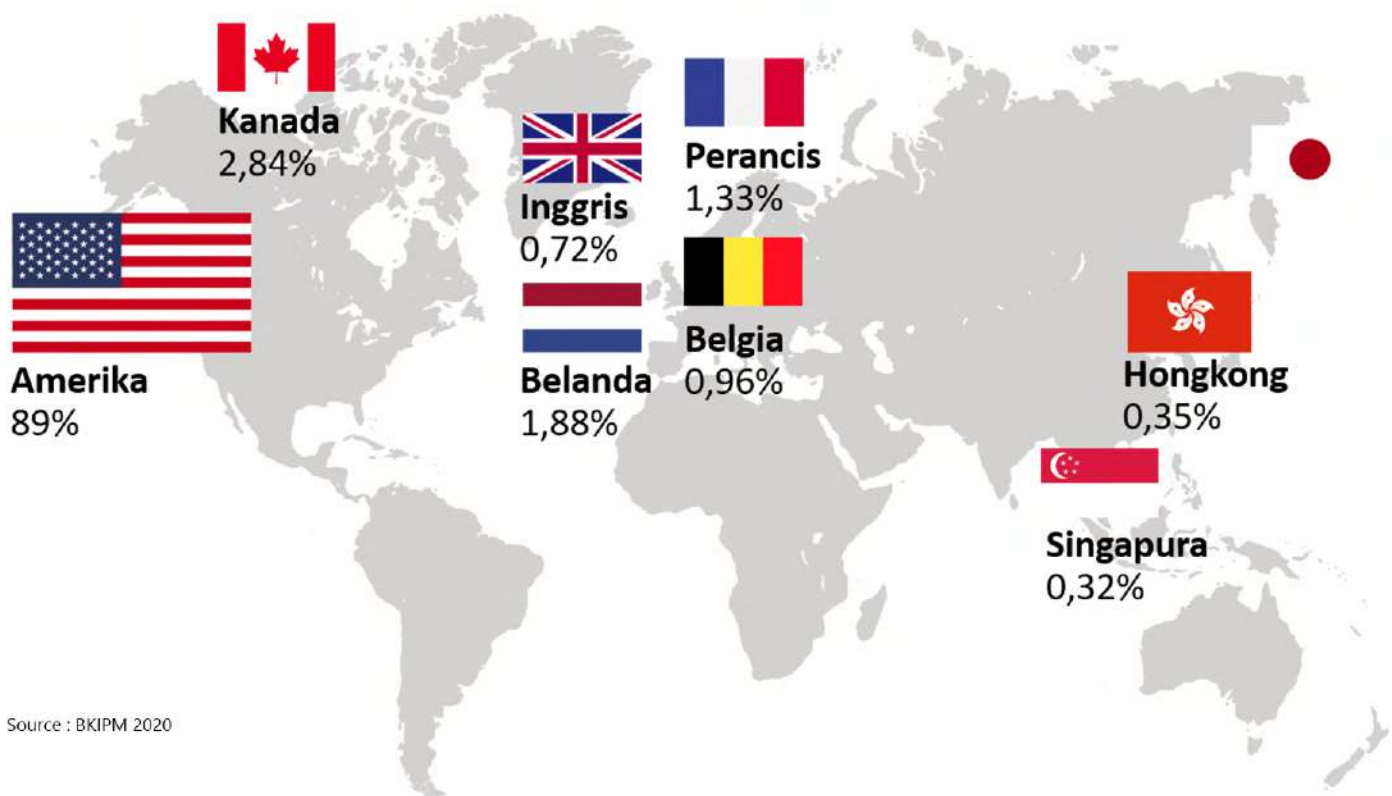
APRI

ANNUAL REPORT



2021

Sustainable
Traceable



“In the 2018 - 2020 stewardship period, there was an increase in the number of 4 new members from 12 to 16 members. It can be said that of these 16 members have contributed 85% of the total tonnage of exports to the USA market. During the period Jan-Aug 2020 Urnerbarry recorded imports of pasteurized BSC from Indonesia totaling 18,231,669 Lbs or around 8,277,177 Kg crab meat equivalent to 1,034,647 Kg / month or 58 containers / month departing from several Indonesian ports to the USA . Meanwhile, last year with the same period, namely during the period Jan - Aug 2019 Urnerbarry recorded USA imports amounting to 16,390,694 Lbs or around 7,441,375 Kg from Indonesia. This tonnage is equivalent to 930,172 kg / month or 52 containers / month. So there is an increase of 11.5%.

Meanwhile, the largest contribution of USA pasteurized crab meat imports was from Indonesia, which was around 54.23%. Venezuela is in second place, namely 11.5%. If the estimated average price is USD 9.00 / Lb, the value of Indonesia's exports will be IDR 2.4 trillion up to August 2020. With the extrapolation of the average, it is expected that around 3.8 to 4.0 trillion rupiah in 2020 will be achieved.



“

The FIP currently at SFP Stage 5 : Improvements on the Water – and Progress Rating got A (Advanced Progress) The blue swimming crab fisheries has been assessed in 2015 using the MSC's Fishery Assessment Methodology (V2.0). Current score **SG<72 MSC's standard for sustainable blue swimming crab fisheries.**

Starting in the **second semester of 2020, during the pandemic**, export of Indonesian pasteurized crabs decreased so that crabs as living creatures could reproduce better. then the catching crabs is still in the territory of West Indonesia, while East Indonesia still has the potential to be developed for the empowerment of the crab people's economy. The crab cultivation aspect is still in the middle of the road. Crab, lobster and shrimp cultivation is growing very rapidly. We are sure that In the cultivation of crabs will soon be in front of us. We must not be late from other countries that continue to engineer cultivation technology.

The achievement of MSC certification is in sight, the available funds are still adequate but need explanation & transparency in managing MSC International Standards and being accepted fairly by APRI members. Hopefully **at the end of next year in December 2022, we will achieve it.**

”



HAWIS MADDUPPA

EXECUTIVE DIRECTOR

The Blue Swimming Crab
(*Portunus pelagicus*) fishery in
Indonesia contributes greatly
to the economy for Indonesia
because it is in the 3rd
position after tuna and shrimp
commodities.



About us,

APRI and all members are campaigning sustainability crab harvest to the supply chain for effective impact, increasing crab recruitment through stock enhancement, collaborating with Universities to support scientific research, supporting Ministry of Marine Affairs and Fisheries to develop national Fishery Management Plan and working closely with Fishers community to establish community based fishery management. All project activities are managed in a Fishery Improvement Project (FIP), which determined as 6 FIP stages. Fishery Improvement Project will create sustainable impact to the supply chain, blue swimming crab resources and also to the ecosystem where the blue swimming crab harvested.



More Info about us
scan this barcode
with your camera
phone to see more
about APRI and all
members or visit
www.apri.or.id

Sustainable Traceable

TABLE OF CONTENTS

(Daftar Isi)



About Us
(Tentang APRI)

05



Table of Contents
(Daftar Isi)

06



Organizational Structure
(Struktur Organisasi)

07



Milestone APRI 2020-2021
(Milestone APRI 2020-2021)

08



APRI Members
(Anggota APRI)

10



Suply Chain of Blue Swimming Crab
(Rantai Pasok Hulu-Hilir Perikanan Rajungan)

12



Update Fishery Improvement Progress (FIP)
(Update Program Perbaikan Perikanan Rajungan)

16



MSC Certification Progress
(Progress Sertifikasi MSC)

18

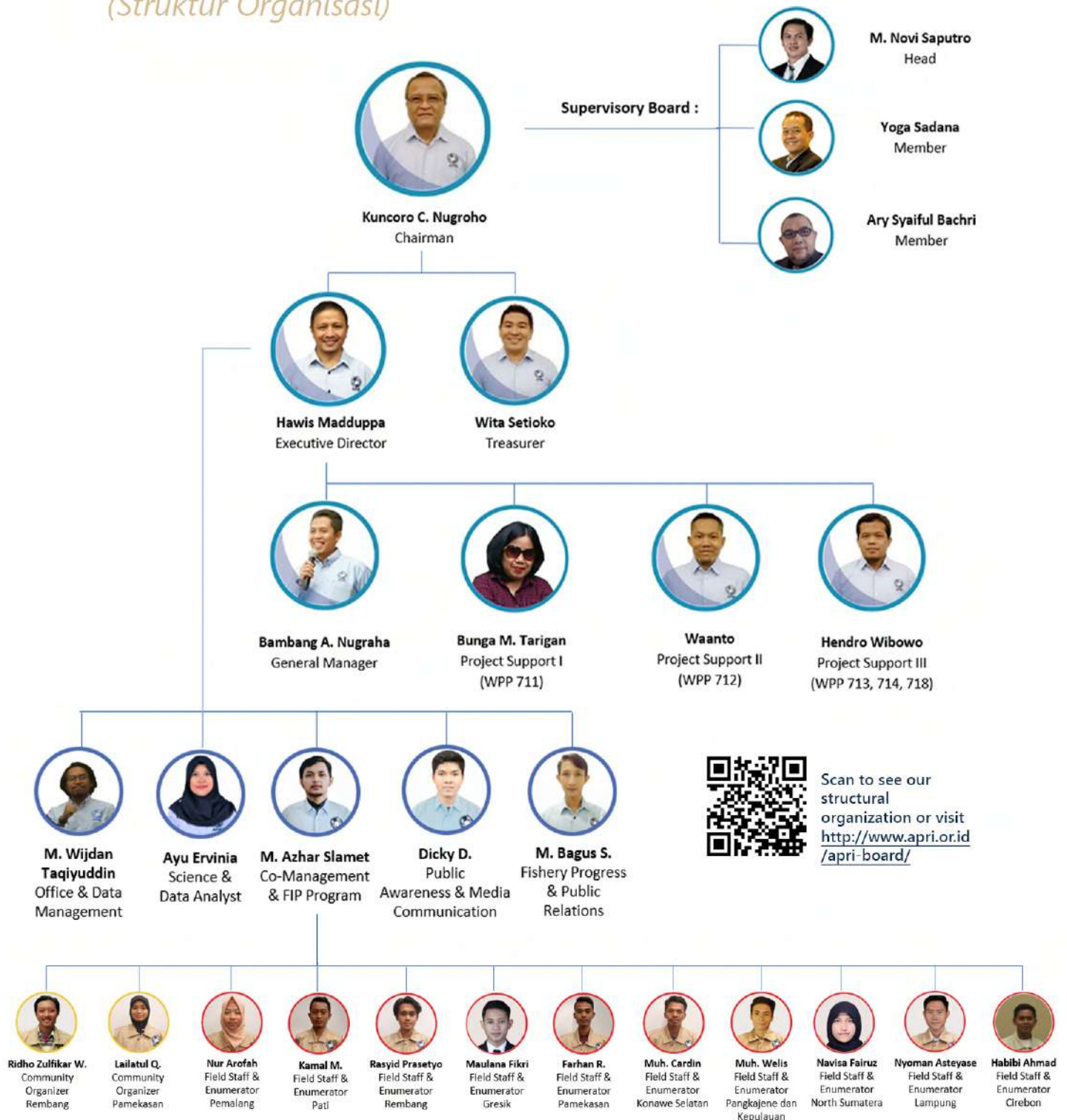


APRI 2021 Activities
(Kegiatan APRI di Tahun 2021)

22

ORGANIZATIONAL STRUCTURE

(Struktur Organisasi)

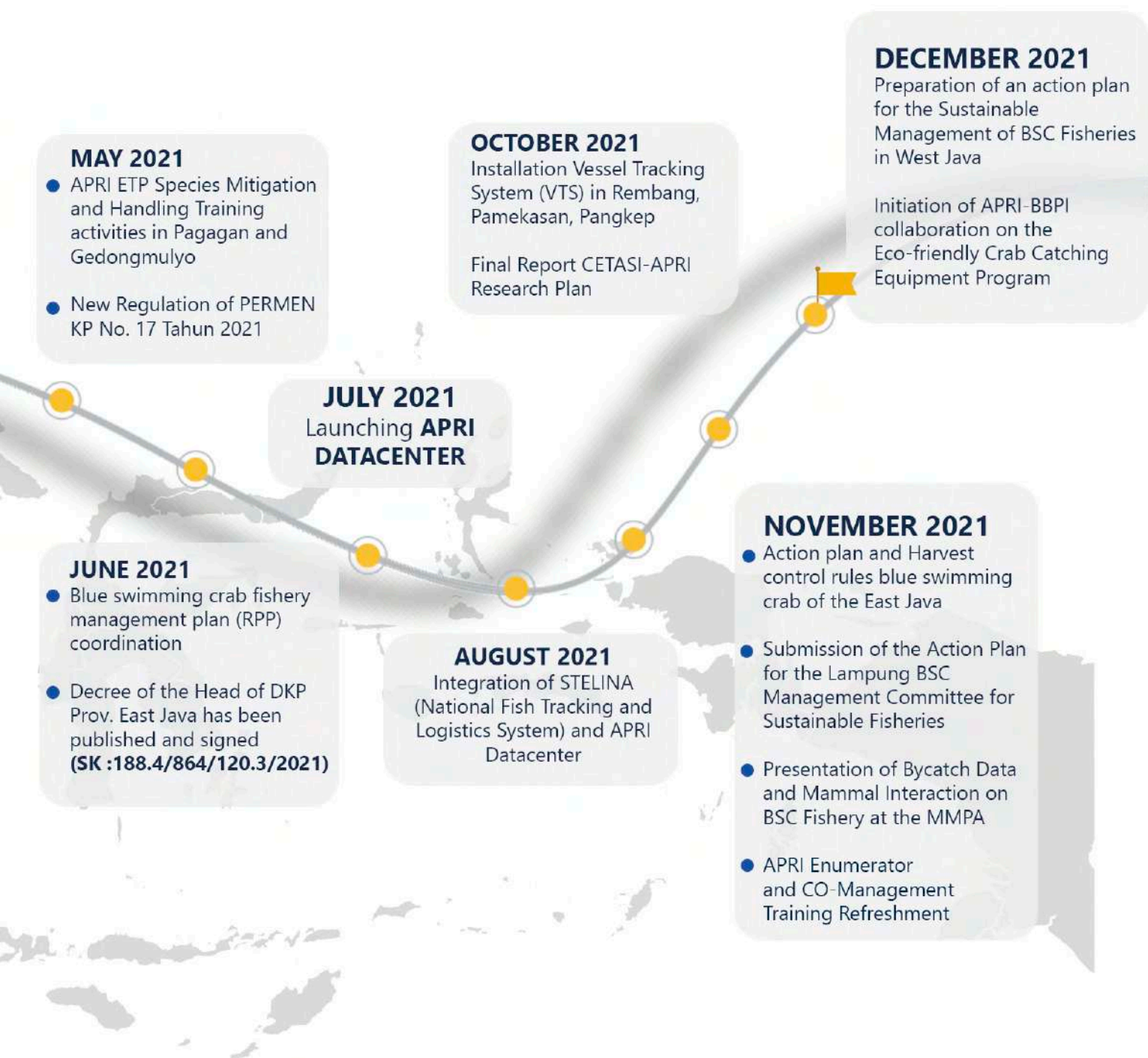


Scan to see our structural organization or visit <http://www.apri.or.id/apri-board/>

MILESTONE APRI 2020-2021

(Milestone APRI 2020-2021)





More info about our activities please scan this barcode or visit : <http://www.apri.or.id/>

APRI MEMBERS

(Anggota APRI)



PT. Kelola Mina Laut



PT. Bumi Menara Internusa



PT. Phillips Seafood Indonesia



PT. Pan Putra Samudra



PT. Mutiara Laut Abadi



PT. Handy Seafood International



PT. Rex Canning



PT. Grahamakmur Ciptapratama



PT. SUMBER MINA BAHARI



PT. Muria Bahari Indonesia



PT. Nirwana Segara



PT. Fresh On Time Seafood



PT. Bahari Mulia Utama



PT. Nuansa Cipta
Magello



PT. Kemilau Bintang
Timur



SULAWESI



Makassar : 7

Meet Our Members

17

APRI and all members are campaigning
sustainability crab harvest to the supply chain
for effective impact, increasing crab
recruitment through stock enhancement



More info about
our members
please scan this
barcode or visit :
[http://www.apri.or
.id/apri-board/](http://www.apri.or.id/apri-board/)

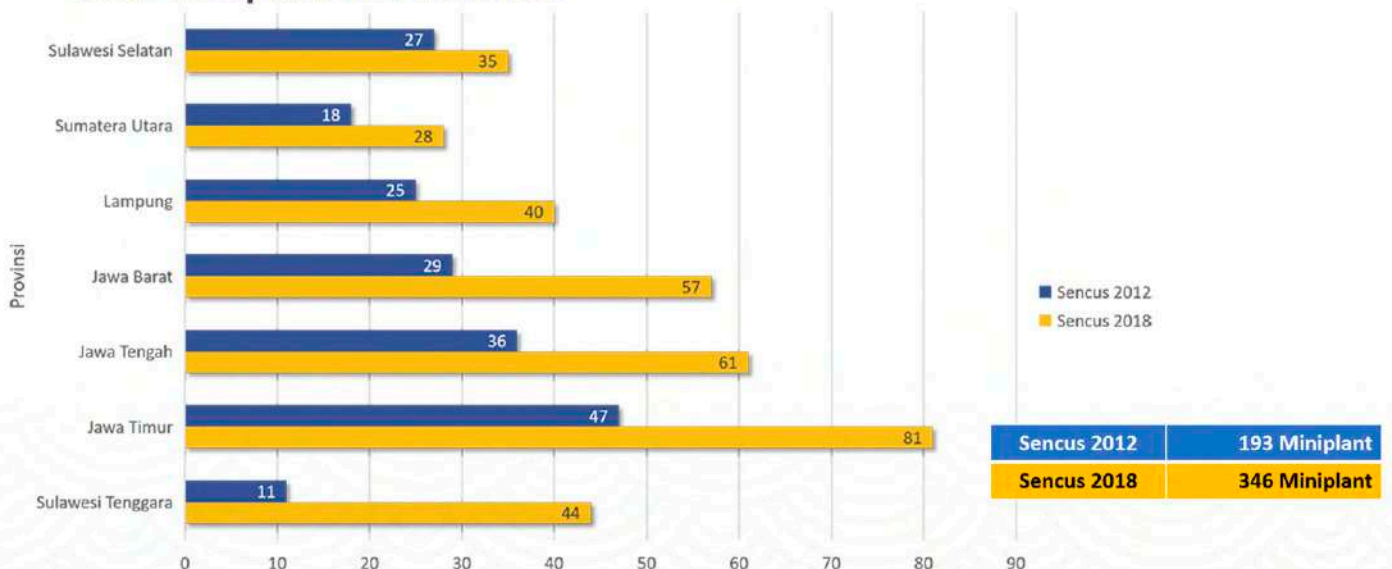
SUPPLY CHAIN OF BLUE SWIMMING CRAB

(Rantai Pasok Hulu-Hilir Perikanan Rajungan)

Catching blue swimming crabs (BSC) involves various stakeholders in the supply chain. Apart from fishermen there are **185,000 women who depend on the BSC fishery**.



Total Miniplant in 7 Province



BSC Processor Plant In Indonesia

KALIMANTAN

- | | |
|-----------------------------|-------------|
| 1. PT Fresh On Time Seafood | Pontianak |
| 2. PT Fresh On Time Seafood | Banjarmasin |

SUMATERA

- | | |
|-----------------------------------|---------|
| 1. PT Mutiara Laut Abadi | Medan |
| 2. PT Toba Surimi Group | Medan |
| 3. PT Medan Tropical Canning | Medan |
| 4. PT Bumi Menara Internusa | Medan |
| 5. PT Phillips Seafoods Indonesia | Lampung |
| 6. PT Bumi Menara Internusa | Lampung |
| 7. PT Siger Jaya Abadi | Lampung |
| 8. PT Siger Jaya Sentosa | Lampung |
| 9. PT Pan Putra Samudra | Lampung |

SULAWESI

- | | |
|-----------------------------------|-----------|
| 1. PT Phillips Seafoods Indonesia | Pare-pare |
| 2. PT Nuansa Cipta Magello/PCA | Makassar |
| 3. PT Ocean Champ Seafood | Makassar |
| 4. PT Kemilau Bintang Timur | Makassar |



JAVA

- | | | | |
|----------------------------------|----------------|------------------------------------|------------|
| 1. PT Kelola Mina Laut | Cikande-Serang | 7. PT Phillips Seafoods Indonesia | Pemalang |
| 2. PT Fresh On Time Seafood | Bogor | 8. PT Bahari Mulia Utama | Semarang |
| 3. PT Pan Putra Samudra | Cirebon | 9. PT Guna Citra Kartika | Jepara |
| 4. PT Bumi Menara Internusa | Cirebon | 10. PT Muria Bahari Indonesia | Kudus |
| 5. PT Kemilau Bintang Timur | Cirebon | 11. PT Pan Putra Samudra | Rembang |
| 6. PT Karya Persada Khatulistiwa | Indramayu | 12. PT Sumber Mina Bahari | Rembang |
| | | 13. PT Morenzo Abadi Perkasa | Demak |
| | | 14. PT Kelola Mina Laut | Gresik |
| | | 15. CV Kudatama Mas/Handy | Gresik |
| | | 16. PT GrahaMakmur CiptaPratama | Gresik |
| | | 17. Blue Star Anugrah | Pemalang |
| | | 18. PT Bumi Menara Internusa | Surabaya |
| | | 19. PT Nirwana Segara | Sidoarjo |
| | | 20. PT Phillips Seafoods Indonesia | Pasuruan |
| | | 21. PT Maju Bersama Karib | Pasuruan |
| | | 22. PT Rex Canning | Pasuruan |
| | | 23. PT Kemilau Bintang Timur | Banyuwangi |

*(will be join APRI Member)

PT. Java Kayana Segara (Semarang), *PT. Jala Crabindo International (Kendari)

APRI FOCUS

(Focus APRI)



Documentation of Marine Stewardship Council

APRI was established on **July 6th, 2007 in Jakarta**, with noble goals and responsibility to initiate the blue swimming crab management and its natural resource fairly and wisely, so the benefit will last for the future generation and sustainable economically and ecologically.



Traceability System

Pilot traceability systems through control document



Stock Assessment & Enhancement

To support Stock Assessment Programs in the Java Sea by applying SPR in addition to conventional stock assessment and stock enhancement



Co-Management

Complete the National Fishery Management Framework, formalize a steering committee for WPP-712 (Java Sea)



Environmentally Friendly Fishing Gear

Review and implemented environmentally friendly fishing gear in BSC fisheries



Enforcement & Compliance

To improve enforcement and compliance of fishery policies through assessing supply chain



Empowerment

Empowerment and organization of fisher communities

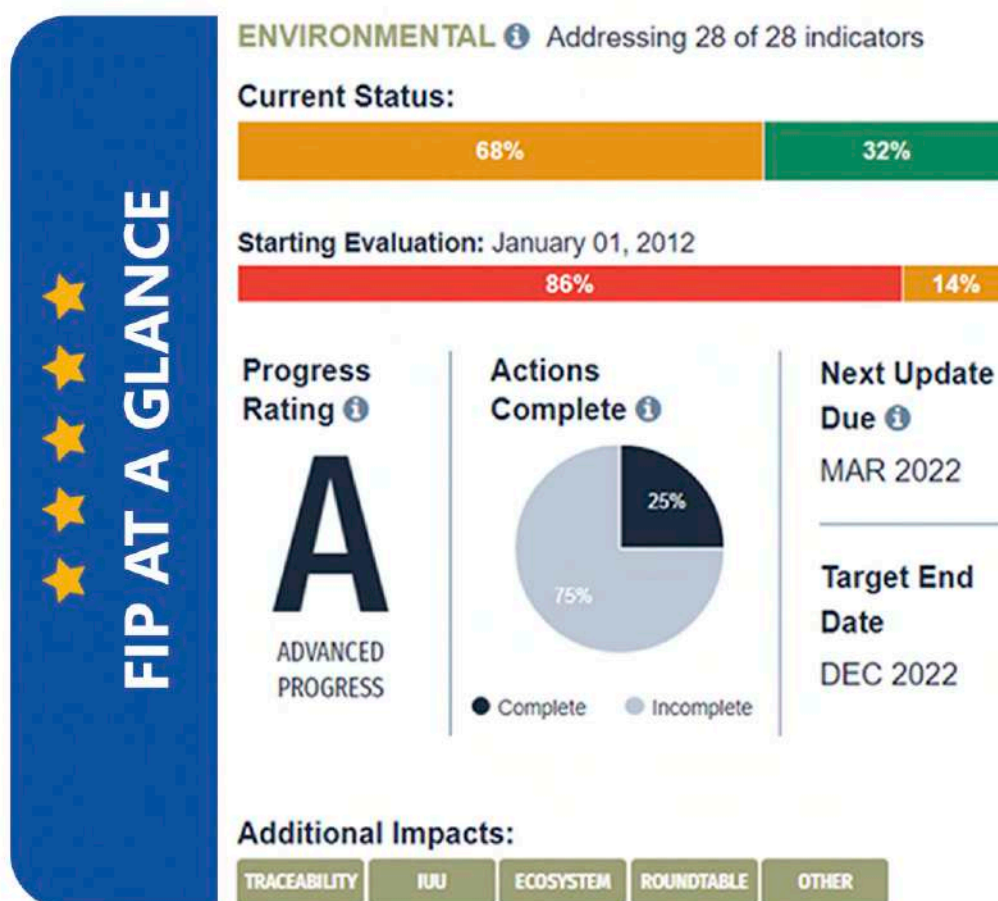


More info about
APRI Focus
please scan this
barcode or visit :
[http://www.apri.or
.id/about/](http://www.apri.or.id/about/)

FISHERY IMPROVEMENT PROJECT UPDATE

(Update Perkembangan FIP)

The organization APRI - whose members include over 30 seafood industry businesses and processors - covers more than 85% of purchased crab in Indonesia. All members involved are working to promote not only sustainable crab harvest, but a sustainable supply chain as well. The FIP aims to support scientific research through collaborations with universities, to develop a national Fishery Management plan through a partnership with the Ministry of Marine Affairs and Fisheries, and to establish community based fishery management by working with local fishing communities. The FIP is meant to have a lasting impact on the sustainability of the fishery's supply chain, on blue swimming crab resources, and also on the ecosystem where the species is harvested.



More info about FIP Update please scan this barcode or visit : <https://fisheryprogress.org/>



INDONESIA FIP STATUS REPORT

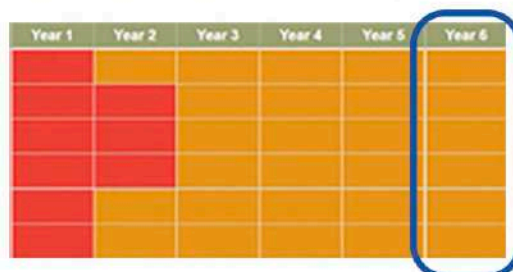


The FIP currently at **SFP Stage 5 : Improvements on the Water** – and Progress Rating got A (Advanced Progress)

The blue swimming crab fisheries has been assessed in 2015 using the MSC's Fishery Assessment Methodology (V2.0). **Current score SG<72** MSC's standard for sustainable blue swimming crab fisheries

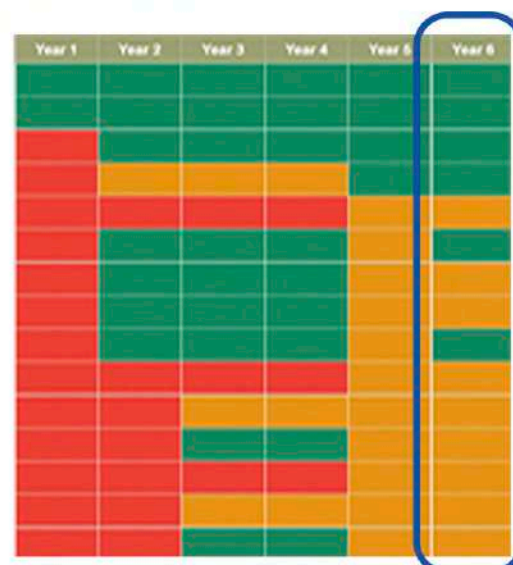
P1. Sustainable Fish Stock

- Stock status outcome (1.1.1)
- Stock rebuilding outcome (1.1.2)
- Harvest strategy (1.2.1)
- Harvest control rules & tools (1.2.2)
- Harvest strategy information & monitoring (1.2.3)
- Assessment of stock status (1.2.4)



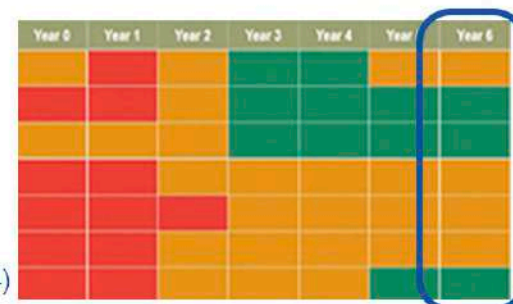
P2. Minimizing Environmental

- Primary species outcome (2.1.1)
- Primary species management (2.1.2)
- Primary species information (2.1.3)
- Secondary species outcome (2.2.1)
- Secondary species management (2.2.2)
- Secondary species information (2.2.3)
- ETP species outcome (2.3.1)
- ETP species management (2.3.2)
- ETP species information (2.3.3)
- Habitat outcome (2.4.1)
- Habitat management (2.4.2)
- Habitat information (2.4.3)
- Ecosystem outcome (2.5.1)
- Ecosystem management (2.5.2)
- Ecosystem information (2.5.3)



P3. Effective Management

- Legal/customary framework (3.1.1)
- Consultation, roles & responsibilities (3.1.2)
- Governance/policy long-term objectives (3.1.3)
- Fishery-specific objectives (3.2.1)
- Decision-making processes (3.2.2)
- Compliance & enforcement (3.2.3)
- Monitoring & management performance evaluation (3.2.4)



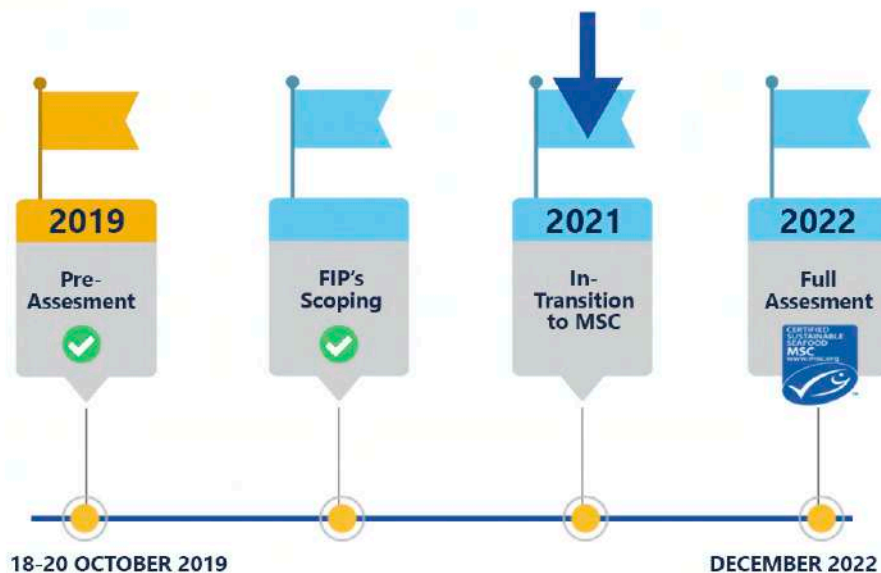


MSC CERTIFICATION PROGRESS

(Tahapan Sertifikasi MSC)

Asosiasi Pengelolaan Rajungan Indonesia (APRI) / Indonesian Blue Swimming Crab Association as an organization which is focusing on the sustainability of blue swimming crab fisheries always developing the programs to realize it. In this time, APRI try to get the Marine Stewardship Council (MSC) certification for the sustainability of the blue swimming crab resources and industry. Previously, MMAF and MSC had signed MOU on **27 August 2019 regarding support for enhancing capture fisheries and sustainable markets in Indonesia.**

APRI done the MSC pre-assessment in Madura. Blue swimming crab fisheries being one of the fisheries that pre-assessed through the Fish for Good funding. The site visit for pre-assessment proses conducted on **18-20 October 2019 with take place in Madura Island**, especially in Bangkalan and Pamekasan District. Currently, APRI has done the MSC pre-assessment. The recommendation from pre-assessment has presented by Conformity Assessment Bodies (CABs) with MMAF and APRI on 18 June 2020. The recent activities is the preparation of action plan from the recommendation. The first step is socialization and coordination with local government, formation of working group, and preparation of action plan document. And **MSC full assessment is expected on 2022.**



MSC PROGRESS

(Perkembangan MSC)

Principle 1 - Sustainable Fish Stock

Performance Indicator	Score Pre-Assesment	Score ITM to MSC
1.1.1 – Stock status	<60	60-79
1.1.2 – Stock rebuilding	<60	60-79
1.2.1 – Harvest Strategy	60-79	60-79
1.2.2 – Harvest control rules and tools	<60	60-79
1.2.3 – Information and monitoring	60 – 79	60-79
1.2.4 – Assessment of stock status	60 – 79	60-79

Principle 2 - Minimizing Environmental Impact

Performance Indicator	Score Pre-Assesment	Score ITM to MSC
2.1.1 – Primary Outcome	≥80	≥80
2.1.2 – Primary Management	≥80	≥80
2.1.3 – Primary Information	≥80	≥80
2.2.1 – Secondary Outcome	<60	≥80
2.2.2 – Secondary Management	<60	60 – 79
2.2.3 – Secondary Information	60 – 79	≥80
2.3.1 – ETP Outcome	60 – 79	60 – 79
2.3.2 – ETP Management	<60	60 – 79
2.3.3 – ETP Information	>80	≥80
2.4.1 – Habitats Outcome	≥80	60 – 79
2.4.2 – Habitats Management	≥80	60 – 79
2.4.3 – Habitats Information	60 – 79	60 – 79
2.5.1 – Ecosystems Outcome	60 – 79	60 – 79
2.5.2 – Ecosystems Management	60 – 79	60 – 79
2.5.3 – Ecosystems Information	60 – 79	60 – 79

Principle 3 - Effective Management

Performance Indicator	Score Pre-Assesment	Score ITM to MSC
3.1.1 – Legal and customary framework	60 – 79	60 – 79
3.1.2 – Consultation, roles and responsibilities	≥80	≥80
3.1.3 – Long term objectives	≥80	≥80
3.2.1 – Fishery specific objectives	≥80	60 – 79
3.2.2 – Decision making processes	<60	60 – 79
3.2.3 – Compliance and enforcement	<60	60 – 79
3.2.4 – Management performance evaluation	≥80	≥80



Blue swimming crab (*Portunus pelagicus*) as one of the most important Indonesia marine resources, have been realized being exploited and processed for consumption in the increasing numbers so it is important to keep the blue swimming crab stock in the wild, to managed properly, ethically and sustainability. The development of international consumer demand for seafood products that adhere to the principles of ethical and good fishing practices are also encourage crab conservation.



More info about
this please scan
this barcode or
visit :
[http://www.apri.or
.id/about/](http://www.apri.or.id/about/)



APRI ACTIVITIES

(Kegiatan APRI 2021)



APRI 4th Quarterly Meeting and National Conference "Seafood Industry Outlook in 2021"

Saturday, 19 December 2020 through the Zoom Meeting. APRI The Indonesian Rajungan Management Association (APRI) holds its fourth quarterly meeting (APRI Quarterly Meeting). This meeting is held regularly every three months for coordination, information sharing and evaluation for and from APRI members, APRI administrators and APRI partners. The meeting was held through the Zoom Cloud Meeting which was attended by 18 APRI members who are fisheries processing actors. The meeting this time focused on the Seafood Industry Outlook in 2021 with great resource persons Prof. Dr. Ir. Rokhmin Dahuri, MS (KKP) as Coordinator / Advisor for KKP's HR, Technology and Research Competitiveness and Mrs. Ir. Artati Widiarti, M.A. as the Director General of PDSPKP KKP.



Data Management Committee (DMC) Meeting Southeast Sulawesi

December 22, 2020, APRI attended an activity by the Southeast Sulawesi Provincial DKP in order to realize sustainable crab fisheries management in the Southeast Sulawesi region. In this activity, APRI, represented by Mr. Bambang Arif Nugraha and Mrs. Ayu Ervinia, explained that APRI's FIP has been running in the Southeast Sulawesi area. The activity was also attended by important figures from DKP



Meeting with the Auditor Global Reliance International (PT. GRI)

Preparation for the 2021 Control Document Audit System (CDAS), APRI held a meeting through a Virtual Meeting in the context of Preparation for the Control Document Audit System (CDAS) in 2021 with Global Reliance International (GRI) as the auditor as well as APRI received support from the SFP and NFI Crab Council. attended by Mr. Samsul Arifin as Chairman of GRI. CDAS is an important thing to be able to control and prevent it to be able to guarantee traceability.



Coordination and Harmonization Meetings Fishery Management Program The crab in the GEF-5 project.

Activities organized by the Directorate of Fish Resources Management - KKP. On the occasion of this meeting, APRI explained several programs related to the management of small crab fisheries in Indonesia based on the Fishery Improvement Project. With the coordination and harmonization related to the management of crab fisheries, we hope that in the future there will be a synergy for sustainable fisheries in Indonesia.



Provincial PSDKP (Ditjen Pengawasan Sumberdaya Kelautan dan Perikanan) Visit Rembang in Gedongmulyo Village Central Java to Survey Crab Protected Area

On February 9 yesterday, visiting and discussion activities took place. Zulfikar (Co-Management APRI) conveyed the #GTK5Menit program and with the local POKMASWAS to create a small crab protected area due to the increasing number of fishermen from other areas who enter the fishing area of the village crabs in Gedongmulyo using fishing gear that is not environmentally friendly.



Webinar 3rd APRI Youth Innovation "Mapping of the Rajungan Ecosystem"

This activity is the highlight of APRI Youth Innovation 2020. The 5 best teams selected from the Bogor Agricultural Institute, Trunojoyo Madura University, and Brawijaya University have presented the results of their research related to the Mapping of the Rajungan Fishery Ecosystem. We also congratulate:

Best Team 3rd APRI Youth Innovation

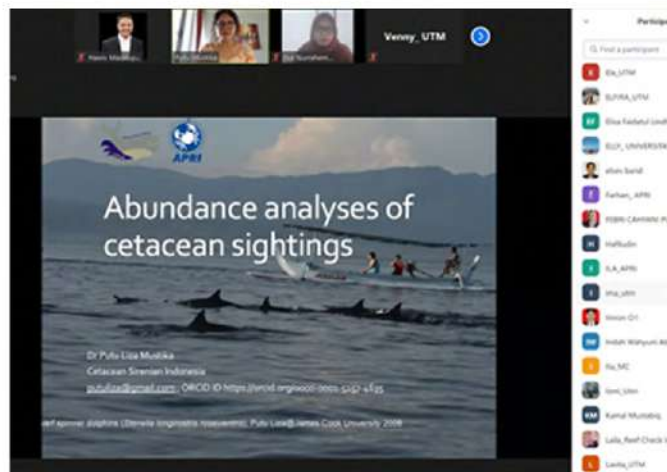
1. Team Irsyal Ardiansah - Bogor Agricultural University
2. Pahad Maulana Team - Trunojoyo University Madura
3. Riqki Yoga Team - Brawijaya University

The next APRI Youth Innovation activity will soon be held for young people with enthusiasm and innovative ideas to contribute to the sustainability of crab fisheries in Indonesia



Fisherman Layur - Lasem together with APRI and DKP Central Java Form of Concern for Crab Fisheries

The Layur-Lasem Fishermen Group Gedongmulyo Rembang, Central Java on Friday, March 5, 2021 through the Rembang Regency Marine and Fisheries Service together with the APRI team and the KKP Field Extension Team assisted by the Layur-Lasem Fishermen Group to carry out the reduction of the "Crab Shelter" which is expected to become an area, or a protected area for small crabs. Hopefully this awareness about the sustainability of the small crab fishery by fishermen groups in this area can also be implemented in other areas.



Webinar: Basics Ecological Research and Bycatch Cetaceans

APRI is collaborating with CETASI and Trunojoyo Madura University in conducting webinar activities related to "Basics of Ecological Research and Cetacean Bycatch". In an effort to minimize environmental impacts, research related to Bycatch cetaceans is needed in order to maintain the balance of our marine ecosystem. The activity was held on Thursday, March 18, 2021



Media Campaign: Blue Swimming Crab for Prosperous Society

Monday, 22 March 2021 APRI and all parties related to the small crab fishery initiated by the Coral Triangle Center (CTC). Organizing activities related to media campaigns where the role of the media needs to be done to provide information and increase public awareness of the small crab fishery.



First Quarterly Meeting (Q1) in March 2021: For Sustainable Crab Fisheries

In March 2021, the Asosiasi Pengelolaan Rajungan Indonesia (APRI) held a Quarterly Meeting or commonly known as Q1. This routine activity every three months is attended by all members to maintain a commitment to sustainable crab fisheries management. The agenda for these activities is related to socialization related to APRI Drainage for the period 2021-2022, APRI Sustainable Funding, Presentation on the Development of the FIP Action Plan. The activity continued with the symbolic handing over of APRI membership certificates from the General Chair to PT PSI (PHILLIPS SEAFOODS INDONESIA) represented by Mr. Nana as a form of APRI appreciation for members who continue to support the sustainability of crab fisheries in Indonesia. PT PSI itself is a pioneer of crab fisheries in Indonesia. "PT PSI and of course other APRI members hope that the crab business will continue to exist because the crab fishery is a commodity that is a source of foreign exchange income for these fishermen and others," said Pak Nanang.



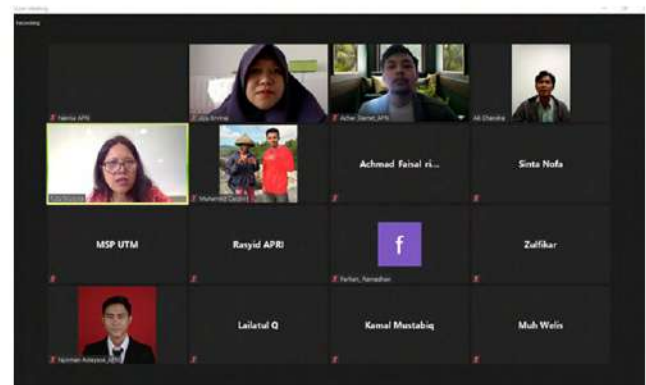
APRI Attends the Directorate General's Technical Working Meeting Catch Fishery 2021

APRI attended the "Technical Working Meeting of the Directorate General of Capture Fisheries 2021" which was held openly online on 6-9 April 2021. The activity was related to the synergy in realizing the Rebound KKP in increasing capture fisheries PNPB and fishermen's welfare.



ASEAN FIP Manager Meeting

Dr. Hawis Madduppa (APRI) attended the event as well as conveyed some information related to the FIP of crabs in Indonesia. This activity aims to work together in finding solutions to face challenges in fisheries management. This activity lasts for two days on 7-9 April 2021



Bycatch Research Coordination Meeting Marine Mammals in Crab Fisheries In Madura

The Marine Mammal Bycatch Research Coordination Meeting on Crab Fisheries in Madura was held on Thursday, April 15 2021, APRI, UTM, and Cetasi held a coordination meeting related to technical preparation of research in indicators of minimizing environmental impacts that the crab fishery does not interfere with marine mammal life.



MMPA KKP Team visit and APRI to the Arrest Location Crab in Cirebon

The field visit was carried out on 20-21 April 2021 in Gebang Mekar village and Bondet village, Cirebon Regency in the context of fulfilling regulations on exporting fishery products to the United States (US), especially the Marine Mammal Protection Act (MMPA) – List Foreign Fisheries. This activity aims to propose comparability finding related to MMPA.



FGD Implementation Crab HS- Harvest Strategy

FGD on Consolidation of Crab Fisheries Data as Implementation of the Crab Harvest Strategy. In order to follow up the activities of the GEF-5 grant, APRI participated in FGD activities related to the preparation of the flow, system, and data collection of crabs by APRI in WPP 712. This activity was represented by Dr. Ayu Ervinia and Azhar Slamet.



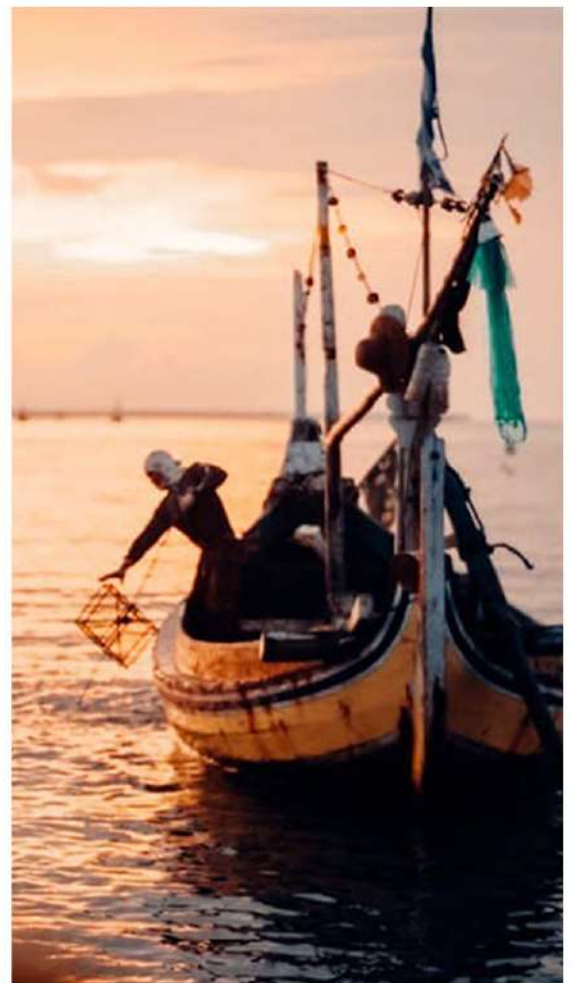
Awarded By Marine Stewardship Council (MSC), APRI Gets Ocean Stewardship Fund for Sustainable Blue Swimming Crab

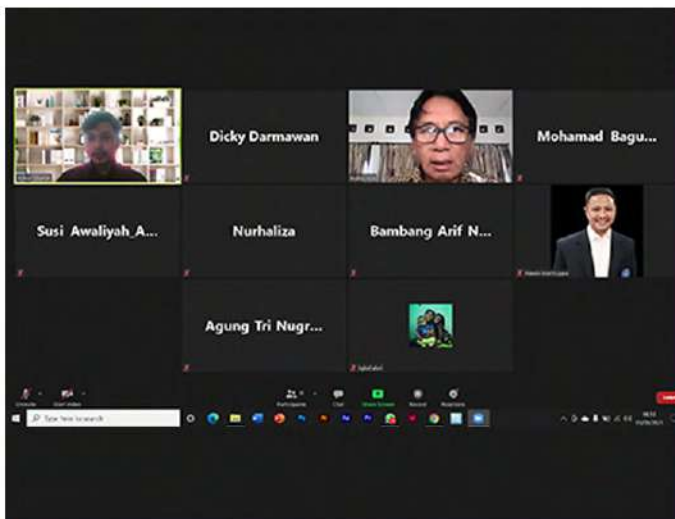
APRI is funded by the **"Ocean Stewardship Fund"** by MSC. Fisheries improvement project (FIP) over several years led by APRI with progress now verified through the **In-Transition to MSC Full Assessment Program**. "The Ocean Stewardship Fund will give us the opportunity to continue to advance the sustainability of the crab fishery. We will be able to collaborate with scientists to conduct research that will support healthy oceans," said Dr. Hawis Madduppa as Executive Director of APRI

With the OSF program, it is certainly very helpful in efforts to promote crab fisheries in Indonesia and provides an opportunity for scientists to support sustainable oceans. The Ocean Stewardship Fund aims to increase the number of sustainable fisheries worldwide. We are accelerating progress by funding innovative research and supporting fisheries at all stages on the path to sustainability.

The project will also be improving the selectivity of traps through the addition of escape vents. This ensures juvenile blue swimming crabs can easily escape. Interactions with endangered, threatened and protected (ETP) species will also be monitored and the impact of the fishery on the wider ecosystem analysed using environmental DNA.

The Ocean Stewardship Fund will give us an opportunity to keep progressing the sustainability of the blue swimming crab fishery. We will be able to collaborate with scientists to carry out research that will support a healthy ocean.





APRI Coordination with PANRITA Regarding Work Programs Same with VTS (Vessel Tracking System)

Prof. Indra Jaya as a team from PANRITA affiliated with the Bogor Agricultural University (IPB) who was present at the coordination meeting explained the trekfish working system with improved technology by making it easier to use. APRI's efforts to always develop crab fisheries in Indonesia have also received support from MSC through the "Ocean Stewardship Fund" with this support, hopefully the FIP program can continue to be carried out. Through TREKFish, the movement of fishing boats and crab catch areas can be recorded.



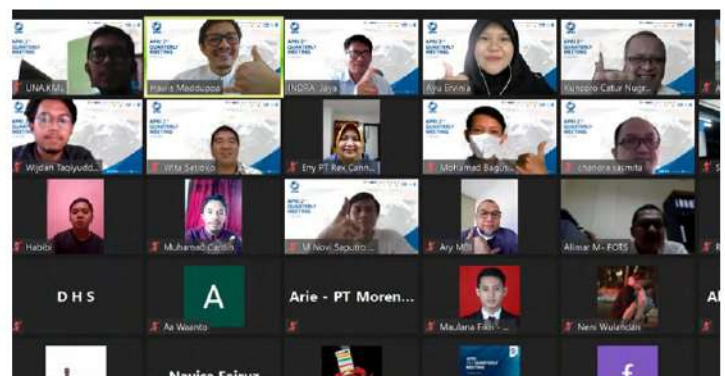
Fisheries Stakeholder Meeting From East Java Province

Thursday, June 3, 2021, a meeting was held related to fisheries management in East Java Province, starting from the East Java DKP Government Agencies and Regency DKP as well as APRI and Brawijaya University, UNAIR, and UTM as well as small crab business actors (UPI), BKIPM Surabaya, etc. This activity is a form of harmonization and collaboration from all stakeholders for sustainable crabs in East Java Province.



Crab Management Plan Fishery Meeting (RPP)

APRI attended meetings related to the crab fishery management plan (RPP) by the DJPT-KKP and supported by UNDP. The activity which was held for two days on 7-8 June 2021 and continued on 17 June was attended by APRI Executive Director Dr. Hawis Madduppa with Dr. Ayu Ervinia.



Second Quarter (Q2) Meeting in July 2021: For Sustainable Blue Swimming Crab (BSC) Efforts

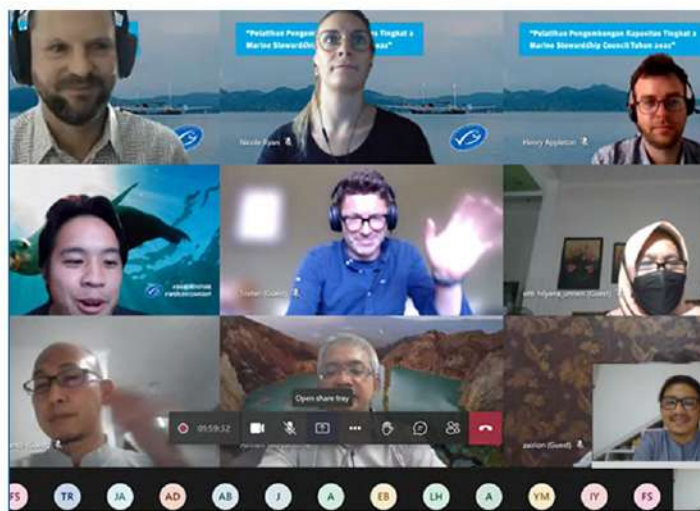
July 17, 2021, APRI has held a quarterly meeting, presenting extraordinary speakers, namely Mr. Trian Yunanda S.Pi, M.Sc as Director of Fish Resource Management, and Prof. Dr. Ir Indrajaya M.Sc from Komnas Kajiskan to to discuss the stock status of Indonesian BSC. In this event, APRI also launched the APRI Datacenter which is a web-based digital platform containing data related to the crab fishery. APRI in the midst of a pandemic, Although the meeting was conducted in the midst of the COVID-19 pandemic, APRI expected that it made contributions to the sustainable crab fisheries in Indonesia.



Launching APRI DATACENTER as BSC Digital Platform for Good Management

APRI has started data collection on crab fisheries since 2015 in Indonesia. The APRI Datacenter was launched on 17 July 2021 in coincidence with the APRI quarterly meeting (Q2) which was witnessed by the Director of Fish Resources Management of the Directorate of Capture Fisheries of the MPA, the Chair of the Komnaskajiskan, Sustainable Envoy National Fisheries Institute Crab Council, APRI Council and Members, along with staff, enumerators and the community officers.

APRI datacenter is a web-based platform that contains various information about crab fishery and it can be easily operated on a desktop device. The platform can be visited at the address www.apri-go-online.com. Through this APRI Datacenter, APRI aims to provide information related to crab fisheries



Dr Hawis Maduppa Joins the Training Capacity Building (CBT level 2) by Marine Stewardship Council

Dr Hawis Maduppa participated in capacity building training (Capacity Building Training/CBT level 2) with the Marine Stewardship Council. In this case, the crab fishery in Indonesia is carrying out the stages of the process towards MSC sustainability standards. This CBT program is part of a three-tiered program led by MSC staff and consultants with experience in MSC assessment.



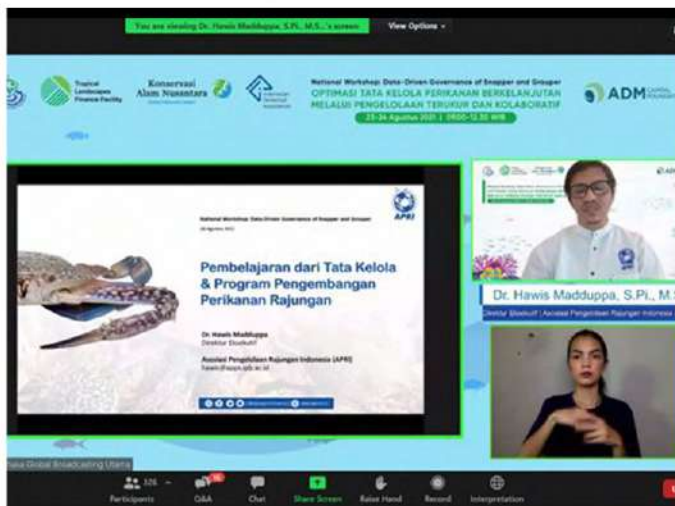
Integration APRI Datacenter and STELINA as the basis for Traceability System

On August 16, 2021, APRI together with the Logistics Directorate of KKP held a meeting related to system coordination with STELINA (National Fish Tracking and Logistics System). During the meeting, APRI explained about the APRI Datacenter which would later be able to integrate with STELINA as the basis for the traceability system in the crab fishery.



Open Public Consultation Regulation By DJPT-KKP (Ministry of Marine and Fisheries Affairs)

Monday, August 2, APRI has participated in a series of activities related to public consultations on non-tax state revenues from the capture fisheries sub-sector which were carried out openly. This activity was also attended by capture fisheries business actors, as well as local governments through their marine and fisheries services, academics, fisheries experts, capture fisheries associations, and media personnel.



Fisheries Governance Optimization Sustainable with Measured and Collaborative

On August 24, 2021, Dr. Hawis Madduppa as Executive Director of APRI participated in a national workshop organized by @tlffindonesia and @ykan_id in this activity, there were many lessons related to sustainable fisheries management so that they could be learned and collaborated with each other in a measurable way to advance Indonesian fisheries.

Collaborate with APRI, Anggini Fuji Master of Marine Science of IPB University had Contribution to BSC Fisheries

Anggini Fuji, a student from the Bogor Agricultural University (IPB) Master of Marine Science who received research funding from the Ocean Stewardship Fund (OSF), which is a funding program from the Marine Stewardship Council (MSC). Anggini Fuji is collaborating with APRI in research activities to identify bycatch using DNA. This research will contribute to the status of crab stocks and increase understanding of the impact of fisheries on the wider environment.

Bycatch is one of the indicators in sustainable fisheries. Research conducted in Bangkalan, Madura, East Java, will later be matched with DNA samples from non-target species that interact with crab fisheries to determine the level of risk they face from catching crabs. This research will contribute to the status of crab stocks and improve understanding of the wider environmental impact of fisheries. This data will form an important part of how fisheries sustainability is assessed against the MSC Fisheries Standards. Hopefully there will be more research related to crab fisheries and can help add expertise around the data needed for sustainable fisheries.





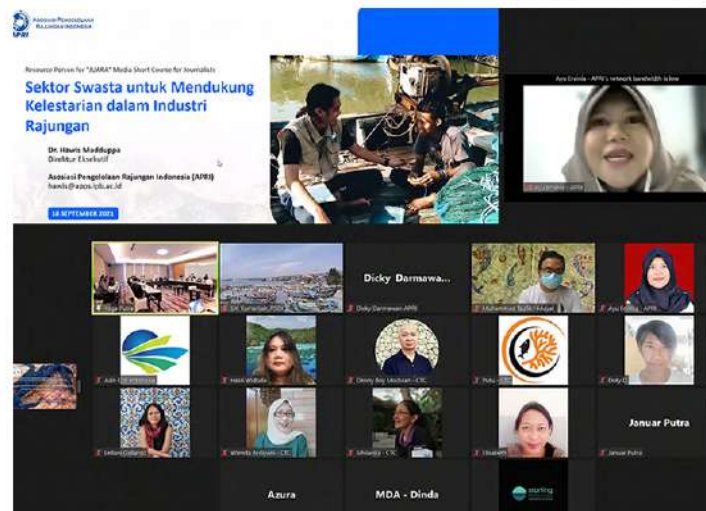
Gedongmulyo Fisherman Received BBPBAP Crab Seeds Assistance Jepara 98,000 heads for Cultivation Development

In order to maintain the sustainability of the crabs, efforts to develop aquaculture continue to be carried out, together with the Center for Brackish Water Cultivation Fisheries (BBPBAP Jepara) which has carried out the process of hatching crabs. Gedongmulyo fishermen get the opportunity to cultivate crabs in the pilot pond cultivation in Gedongmulyo village, Kec. Lasem Rembang. Apart from seed assistance, fishermen also had the opportunity to learn about the hatchery process by BBPBAP Jepara. The total number of seeds in stocking is approximately 98,000 individuals.



Marine Mammal Interaction with Crab Fishing Activities

Thursday, September 23, 2021 through the executive director of APRI, Dr. Hawis Madduppa conveyed related to data collection activities bycatch/NTS by APRI enumerators. This data collection activity does not only apply to marine mammals but to all species that interact with the crab fishery.



APRI FIP Presentation In "JUARA" Crab Prosperous by Coral Triangle Center

Saturday, September 18, 2021. APRI had the opportunity to present the fishery improvement project and support for fisheries sustainability from the industrial sector through Dr. Ayu Ervinia in a short training activity "JUARA" for media and journalists in Lampung. This activity organized by @coraltrianglecenter is an important effort in campaigning for a sustainability program by involving the role of the media and journalists.



APRI Board doing Audience to the Marine and Fisheries Department of East Java

Friday, October 8, the APRI board conducted an Audience activity to the DKP East Java. This hearing activity is a form of government synergy with APRI. Collaborative efforts in measuring the small size and collecting data and the feasibility of miniplants through GMP for the advancement of crab fisheries in the East Java region. This visit was welcomed by the Head of the East Java DKP Capture Division Mr. Miftahol Arifin and the Head of the SDI Division Mr. Jadmika Sufiadi, followed by an audience with the Head of the East Java DKP Office Mrs. Dyah Wahyu Ermawati.



More info about APRI Activities please scan this barcode or visit : <http://www.apri.or.id/>



Installation of VTS (Vessel Tracking System) "TREKFish" to Know Where Fishermen Catch Blue Swimming Crab

This cooperation program related to VTS (Vessel Tracking System) has been implemented since 2019 between APRI and PANRITA. The tool that can be used to monitor fishermen is called "TREKFish", along with technological developments, it is also updated through modifications to this TREKFish tool to make it easier to apply and use by small-scale fishermen.

7-10 October 2021, the installation of the "TREKFish" VTS activity with PANRITA in Pamekasan, Pangkep and Rembang. This installation activity aims to fulfill data collection related to restocking system development. Fishermen with boats equipped with VTS will be able to find out where fishermen catch crabs. The installation of this VTS was carried out by PANRITA as the technology maker of this tool. This VTS has also undergone the latest modifications to make it easier for fishermen and users in tracking applications, APRI has provided 15 "TREKFish" VTS devices in each area.

This technology can help fishermen to see their track record, such as where they went, where they caught, and the size of the fish. He gave an example, in that area they catch a lot of fish, often gathering at certain times. Suparman, one of the fishermen using TREKFish VTS, also revealed that the existence of this technology and the presence of APRI are quite helpful for small crab fishermen. This tool is not only able to provide information related to fishing trip data to catch crabs, but can also be used as a history of traps that have been stocked and lost.

This VTS installation program is also a realization of OSF (Ocean Stewardship Council) funding to APRI, with this collaboration it is hoped that Indonesian crab fisheries can prosper and of course create a sustainable crab fishery.





APRI Quarterly Meeting Q3 Hybrid In Surabaya

The APRI Quarterly Meeting Q3 took place in a Hybrid manner after almost 2 years of the APRI quarterly meeting being conducted offline, finally in the third quarter on October 9, 2021, this meeting was held online in Surabaya. This activity was attended by 17 members of APRI both online and offline and the NFI Crab Council did not forget the presence of an observer by PT. JCI Kendari.



APRI's participation in Drafting Harvest Control Rule (HCR) for Blue Swimming Crab

20-22 October 2021. As a form of implementation of the Harvest Strategy activities, a national coordination meeting for the preparation of the Harvest Control Rule (HCR) has been held, Dr. Hawis Madduppa as the executive director of APRI has explained the draft proposal on HCR. The activity lasted for two days online and offline.



Fishing Gear Swap of Fishing Equipment by DKP Pamekasan to KUB Capit Biru

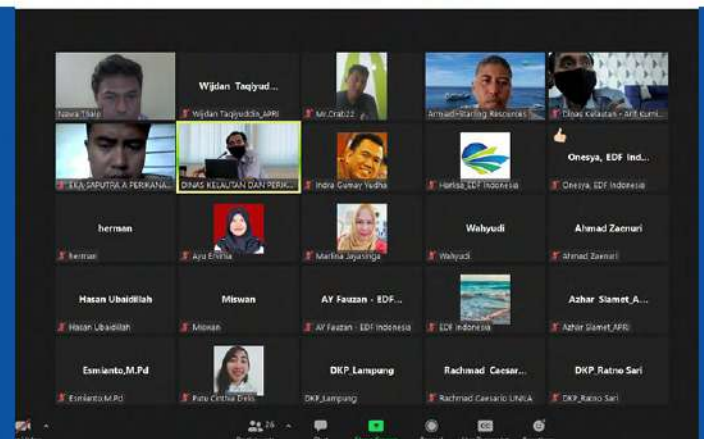
Thursday, November 4, 2021. The Head of the DKP of Pamekasan and the Head of the Fishing Gear Division along with their staff distributed aid for fishing gear, which is a recording of fishing gear (Fishing Gear Swap). This activity was also coordinated by APRI CO-Management Lailatul Qomariyah who was in the field with KUB Berkah Capit Biru.

A total of 1000 fishing gears in the form of folding traps have also been socialized by DKP Pamekasan and APRI CO-Management regarding how to use and use them. Previously, blue claw fishermen used box traps, the role of APRI CO-Management was also to help with the use of folding traps for fishermen. The aid of this fishing gear is also expected to make it easier for fishermen to go to sea. One of the advantages of folding traps is that they are easy to load on ships.

Even though he is not yet used to it, Suparman, the Head of the KUB Berkah Capit Biru Group, is very happy and continues to get used to the use of folding trap fishing gear, which is continuously assisted by APRI CO-Management. The activity of switching fishing gear is expected to be able to improve the welfare of fishermen and increase fishermen's awareness about the use of environmentally friendly fishing gear in accordance with Indonesian regulations.

Pokja 2 meeting (Fisheries Management Committee Sustainable Blue Swimming crabs) KPPRB Lampung

October 2021, the purpose of implementing this activity is to update the biological data of the crab fishery that has been carried out during 2020, update the data on the crab fishery sector that has been carried out during 2020, accommodate and agree on inputs related to the crab fishery data to be submitted at the Lampung KPPRB meeting.





DKP of East Java Establishes an Action Plan for 2021-2022 and Harvest Control Rule

On Friday, November 5, the East Java province crab fishery management meeting was held online and offline. Through the Representative of the Head of the East Java DKP Office, Mrs. Evy Afianasari, ST, MA (East Java DKP Secretary) supports the action plan that has been prepared and agreed upon. On this occasion Dr. Hawis Madduppa as the Executive Director of APRI has explained the rules for controlling the use of crabs.

Blue swimming crab is Indonesia's leading export commodity which continues to be included in the top 5 fishery commodities with the highest export value in Indonesia. Based on the export province, East Java is one of the provinces with the highest exports for this crab commodity. The potential of the crabs needs to be managed properly so that sustainability can be created both from the aspect of resources and business. The management of crabs in Indonesia needs to involve various parties in order to create better management. The Indonesian Crab Management Association (APRI) in collaboration with the Department of Marine Affairs and Fisheries of East Java Province.

Jadmika Sufiadi, S. Pi., M. AP (Head of SDI Capture Division of East Java DKP) also delivered the work program presentation by Jadmika Sufiadi, S. Pi., M. AP (Head of SDI Capture Division of East Java DKP) in the delivery of the work program. And crab management activities need to be carried out properly.

The activity carried out at UPT PMP2KP Surabaya was also attended by Mrs. Ir. Nurwahidah, M. AP (Head of P2HP DKP East Java) who gave her support by appreciating APRI's initiatives related to crab management. At this meeting, it was agreed that the main points in the action plan and the rules for controlling the use of crabs from the East Java Province were agreed. This activity was also attended by several academics, provincial and district DKP, Mrs. Dr. Ir. Besweni, M.Si (DJPT-KKP), BKIPM, PMP2KP, Marine Stewardship Council (MSC), industry players, as well as CO-Management and APRI Enumerators and other supporting partners



National Fishery Improvement Project Coordination Meeting

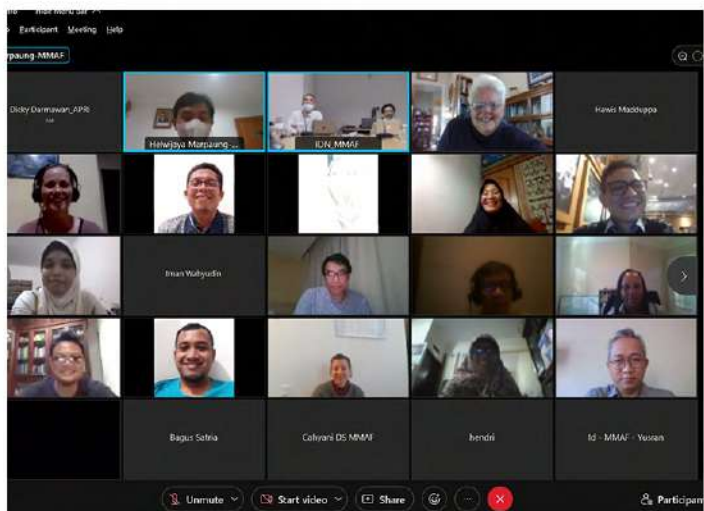
November 9, 2021. It has been held online and offline in Jakarta. At the coordination meeting of the national fisheries improvement program carried out by the Directorate General of Marine Affairs and Fisheries, APRI had the opportunity to explain the development of the crab fishery improvement project (FIP).



APRI Contribute to National Action Plan for the National Development Goals (RAN TPB/SDGs) by BAPPENAS

November 11th. The Ministry of National Development Planning/Bappenas has held a meeting to finalize the preparation of the NAP TPB/SDGs actions for 2020-2024. On this occasion, APRI has provided inputs related to Matrix Goal 14 (Life Below Water).

APRI's contribution in pursuing industries that prioritize the sustainability aspects of crab stocks in the SDGs which is a program from the State of Indonesia.



MMPA Working Team Meeting Exposure Bycatch and Mammal Interaction on Crab

Exposure of Bycatch Data and Mammal Interaction on Blue Swimming Crab Fishery at the MMPA (Marine Mammals Protection Act) Working Team Meeting. Tuesday, November 9, 2021. In order to comply with regulations for exporting fishery products, APRI submitted the results of collecting data on bycatch and mammalian interactions with crab fisheries through APRI's Executive Director, Dr. Hawis Maddupa. The activity was carried out through an online meeting and was attended by the MMPA Working Team



APRI Ready to Integrate KKP E-Logbook with APRI Landing Report Data

Saturday, November 13, 2021. Through the Enumerator and CO-Management APRI Refreshment activity, Mr. Syahril Abd Raup, ST, M.Si as a representative of PSDI-KKP conveyed about e-Logbook as an application for reporting catch data digitally to Enumerators and CO-APRI Management.

In reporting activities, catch data is important so that national fisheries management can run effectively. APRI strongly supports the efforts made by PSDI-KKP regarding the use of e-logbooks to support traceable fisheries. Dr. Hawis Maddupa as the Executive Director of APRI also said that APRI was ready to integrate the landing report data conducted by APRI enumerators with the KKP e-logbook.



APRI Enumerator and CO- Management Refreshment

Semarang, 12-14 November 2021. The opening ceremony was conducted by the Executive Director of APRI, Dr. Hawis Maddupa as a "refreshment" activity for APRI enumerators as well as for upgrading the capacity of APRI enumerators in collecting crab data.

Mr. Syahril Abd Raup, S.T, M.Si as a representative from PSDI - KKP explained the KKP E-Logbook for catches to APRI enumerators which would later be integrated with APRI landing report data. Furthermore, the presentation of stock studies in the WPPNRI area by Prof. Indra Jaya as the Head of KOMNASKAJISKAN where WPP 712 has a healthy stock condition (Green).

Dr. Ir. Zairion, M.Sc participated in providing knowledge related to the bioecological characteristics of crabs to refresh the APRI enumerator training. At the day one, closed with the presentation of Dr. Ayu Ervinia as APRI data analyst regarding the analysis of crab life history data parameters at WPPNRI.

The activity was continued with the presentation of the importance of data collection and management of bycatch data (NTS/Non Target Species) by Dr. Hawis Maddupa.

One of the skills that must be possessed by enumerators and co-management is about communication, therefore the need for a communication strategy described by Mr. Bambang Arif Nugraha. Furthermore, the presentation from APRI staff started with explanations related to the community development program, validation of data collection, and taking photos and videos for activities in the field.

The closing activity was training on the measurement of the biological characteristics of crabs (carapace width, sex, and Gonad Maturity Level) and continued with "fun and games" by APRI enumerators.



Blue Swimming Crab partial harvest by KUB Samudra Jaya Empat dan Lima

Balai Besar Perikanan Budidaya Air Payau (BBPBAP) Jepara has programmed crab cultivation with a community empowerment system. Namely, the community participates in the process of seeding to development. So that the crab stock in nature does not run out, it needs cultivation. There are two systems programmed massively by BBPBAP Jepara. Namely with a cultivation system in the mangrove area or the coast and cultivation with a community empowerment system.

The people who are invited are crab catching fishermen. They are also invited to cultivate crabs in idol ponds. The pond is filled from the results of the hatchery at BBPBAP Jepara. KUB Samudra Jaya Empat & Lima from Ds Gedongmulyo Rembang carried out a partial harvest in the pilot pond for crab cultivation. Seed assistance from BBPBAP Jepara has been partially harvested by fishermen with an average carapace width of 8 cm.

This activity is support by BBPBAP Jepara and DKP Rembang to make this cultivation happen, Zulfikar as co-management of APRI also said that this technique of raising small crabs by fishermen was very useful. Partial harvesting is done because the stress level of the crabs has increased so it has to be harvested, so far the partial harvest has been done twice for approximately 4 months.

The next step will be related to the final harvest and waiting for the harvest. The village of Gedongmulyo, Lasem, Rembang has become a pilot pond for crab cultivation from fishermen. The assistance of BBPBAP Jepara seeds as well as technical guidance and assistance from DKP Rembang and Central Java really helped this activity to be carried out





Discussion with Fishermen Regarding Crab Fishing Gear

In an effort to increase crab catches to be more selective, APRI enumerators discussed with fishermen regarding environmentally friendly fishing gear. APRI enumerators discussed with fishermen at Pamekasan Temple regarding the size of the gill nets (mesh size) in catching crabs.



APRI Attends Meeting of the Committee for Sustainable Management of BSC Fisheries (KPPRB) Lampung Province

This meeting want to collection of biological and socio-economic data analysis of crab fisheries. The purpose of implementing this activity is to update the biological data of the crab fishery that has been carried out during 2020, update the data on the crab fishery sector that has been carried out during 2020, accommodate and agree on inputs related to the crab fishery data to be submitted at the Lampung KPPRB meeting later. It is hoped that the outcome of this meeting is a recommendation regarding data collection and biological and socio-economic data on crab fisheries for the Lampung KPPRB report material



Meeting of the Action Plan Team for the Sustainable BSC Management in West Java Province

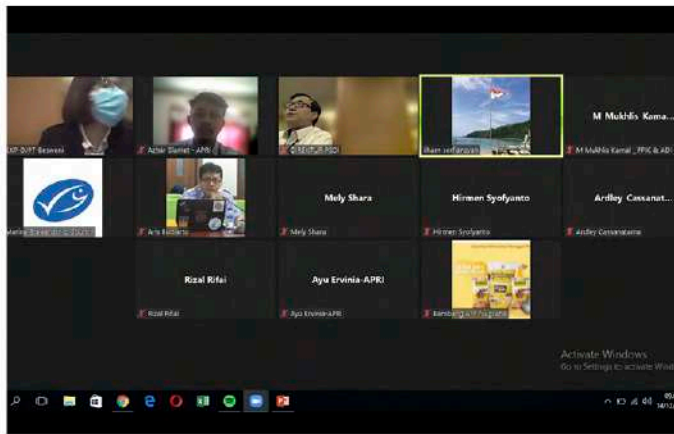
December 7-8 2021, In the context of preparing the Action Plan for Blue Swimming Crab Management Sustainability in West Java Province, Department of Marine Affairs and Fisheries of Java Province The West will hold a meeting with fisheries stakeholders West Java crab to finalize the Draft Management Action Plan Sustainable BSC Fishery West Java Province.

APRI was also present at the activity as a team for preparing an action plan for sustainable fisheries management through West Java Governor Decree number 523.05/Kep.751-Rek/2020.



DKP Jateng with DKP Rembang Give Total 5000 Fishing Gear Traps For Fisherman

Encouraging Fisherman Productivity in Rembang, a Total of 5000 Folding Buds Handed Over to KUB Samudra Jaya Empat and KUB Samudra Jaya Lima. The assistance for environmentally friendly fishing gear from DKP Central Java, which was facilitated through DKP Rembang, is very beneficial for fishermen to improve the welfare of fishermen.



KUB Samudra Jaya Empat and KUB Samudra Jaya Lima Have Got Fisherman's Insurance

172 fishers get fisherman insurance Gedongmulyo, Central Java DKP and DKP Rembang Ready to Provide Protection for Individual Fishermen Small and Traditional This Activity Held on December 15, 2021, this activity is a support from the Central Java DKP facilitated by the Rembang Regency DKP to all fishermen in Rembang, 172 Gedongmulyo fishermen is a continuation of the previous insurance program with the insurer being PT Asuransi Ramayana. The legal basis for fisherman insurance is Law No. 7/2016 concerning the Protection and Empowerment of Fishermen, Fish Cultivators and Salt Farmers.

Free registration from November 2021-November 2022. After that, it will be continued independently by fishermen. Zulfikar as CO-Management APRI Helping apri assisted fishermen to get insurance too.

Attend the FIP National Follow-Up Meeting by DJPT KKP

On December 14th, APRI participated in the follow-up activities of a meeting related to the national coordination of the Fishery Improvement Project. APRI Representative is carried out by Azhar Slamet as APRI Staff





APRI YOUTH INNOVATION 2020

1st APRI YOUTH INNOVATION

10 TIM TERPILIH DARI
8 UNIVERSITAS DI INDONESIA



2nd APRI YOUTH INNOVATION

6 TIM TERPILIH DARI
4 UNIVERSITAS DI INDONESIA



3rd APRI YOUTH INNOVATION

5 TIM TERPILIH DARI
3 UNIVERSITAS DI INDONESIA



3rd APRI YOUTH INNOVATION 15 PROPOSAL

5 TIM TERPILIH

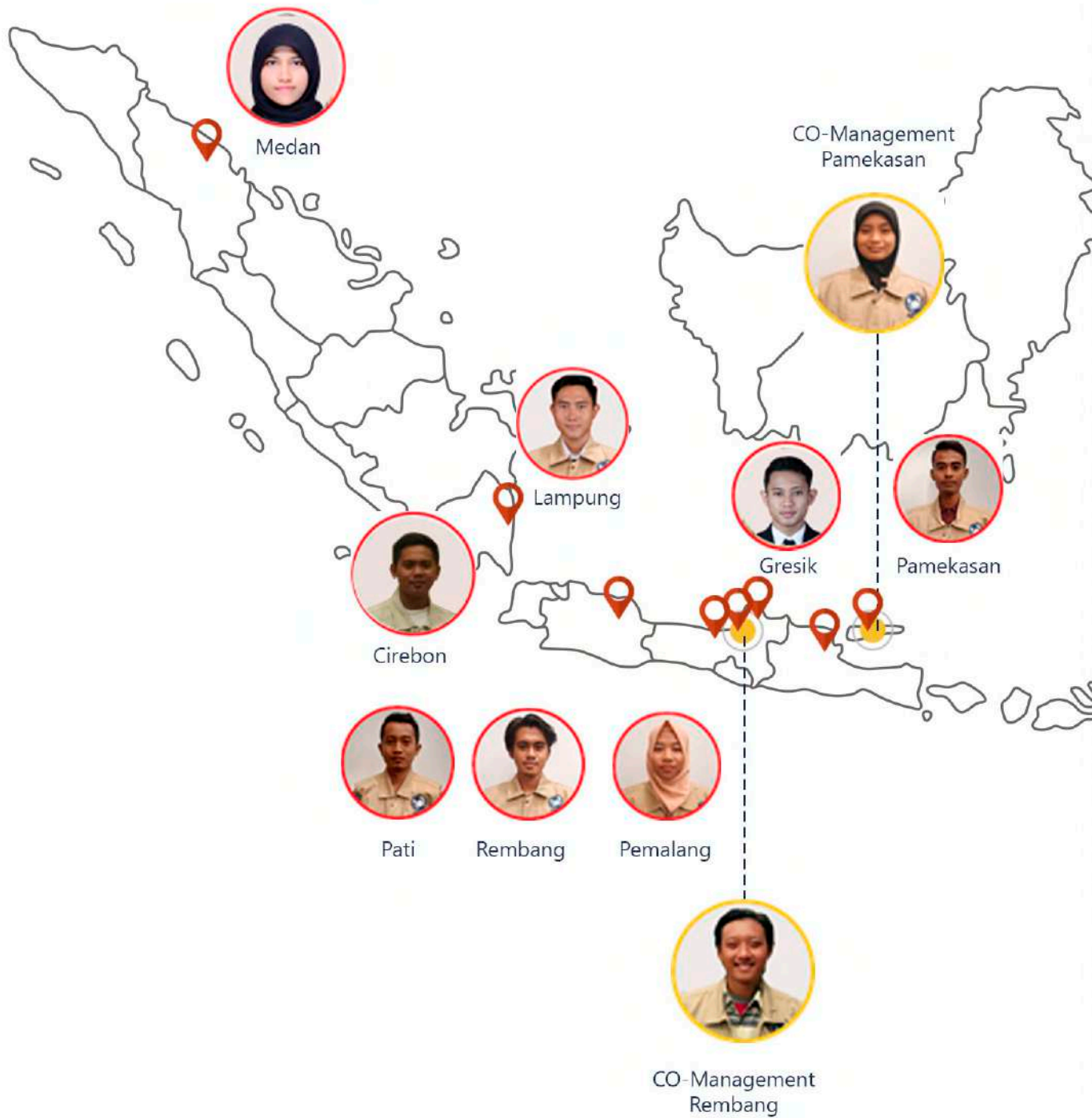
-  Irsyal Ardiansyah :
Ekosistem Terumbu Karang
-  Rifadillah Hisammuddin :
Ekosistem Lamun
-  Pahad Maulana :
By Catch Belangkas
-  Nova Dewi Syafitri Syam's :
Ekosistem Mangrove
-  Riqki Yoga Aprilianto :
Ekosistem Mangrove



More info about APRI
Youth please scan this
barcode or visit :
<http://www.apri.or.id/>

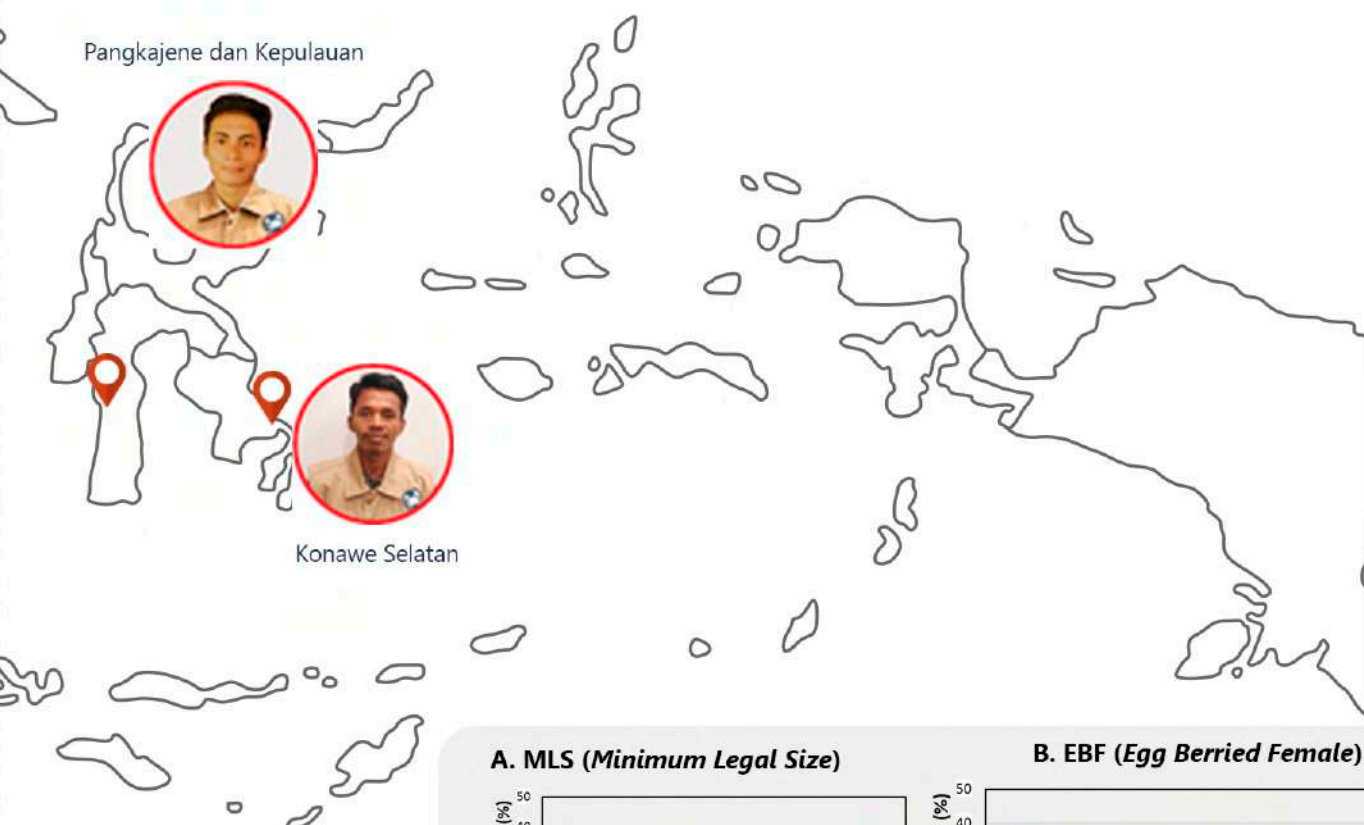
APRI STOCK ASSESMENT

(Kajian Stok Rajungan)



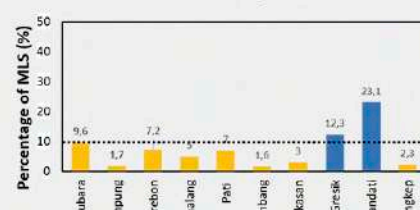
Enumerators play an important role in conducting a research or program of activities. The enumerator is in charge of collecting field data. Serving in the field certainly has its own abilities such as having a high social spirit, both in communication and thoroughness in every detail.

APRI's enumerators are spread across various crab catching areas, such as in Medan, Lampung, Cirebon, Pemalang, Rembang, Pati, Gresik, Sumenep, Pamekasan, Pangkajene and the Islands, South Konawe. Based on this, APRI also provided enumerator training. A very vital role in enumerator data collection is that it can be used for analysis and determining what decisions are right to be made so that crab fisheries in Indonesia are effectively and efficiently sustainable.

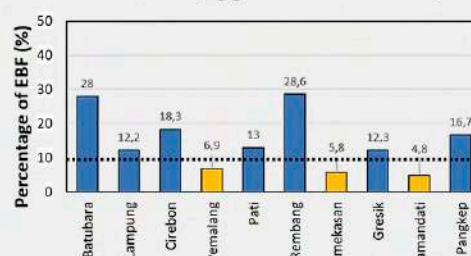


More info about
Stock
Assessment
please scan this
barcode or visit :
<http://www.apri.or.id/download>

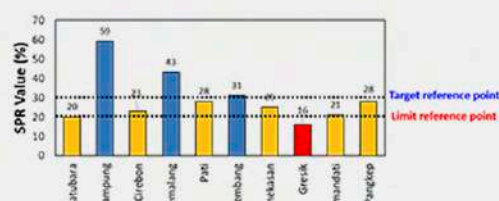
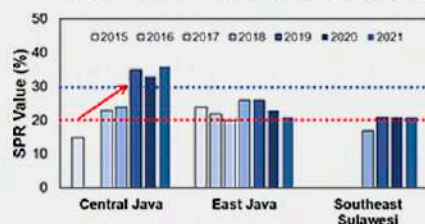
A. MLS (Minimum Legal Size)



B. EBF (Egg Berried Female)



C. Spawning Potential Ratio (SPR)



*Ayu Ervinia APRI Data Analyst Januari - November 2021



ESTABLISH FISHERIES MANAGEMENT COUNCIL

- SK Governor of Southeast Sulawesi No. 289/2017 concerning the Establishment of the Blue Crab Fisheries Management Committee in Southeast Sulawesi Province (2 June 2017)
- Central Java Governor Regulation Number 33 of 2017 concerning Management of Lobster, Crab, and Blue Crab Fisheries in Central Java Province (14 July 2017)
- Central Java Governor's Decree Number 523/93 of 2017 concerning the Formation of the Assistance Team and the Blue Crab Fishery Management/Conservation Team in - Central Java Province (20 November 2017)

Central Java
SK : 523/93/2017

Lampung
SK : G/165/V.19/HK/2018

West Java
SK : 415/Kep.80

- Lampung Governor Decree No. G/164/V.19/HK/2018 concerning Action Plan for Sustainable Blue Crab Fishery Management in East Lampung Coastal Waters, Lampung Province (5 February 2018)



O/DKP

- Lampung Governor Decree No. G/165/V.19/HK/2018 regarding the Establishment of the Blue Crab Fisheries Management Committee in East Lampung Coastal Waters, Lampung Province (5 February 2018)

- Decree of the Head of the West Java Maritime Affairs and Fisheries Service Number 415/Kep.800/DKP regarding the Establishment of a Blue Crab Sustainable Fishery Management Preparation Team at the Marine and Fisheries Service of West Java Province (4 February 2019)

- East Java Governor's Decree (8 June 2021)

APRI 2020-2021 ACTION PLAN

(Rencana Aksi 2020-2021 APRI)



Improvement of
Stock Assessment



Development of
Stock Rebuilding
System



Development of
Conservation
Area



Improvement of
Harvest Strategy



Implementation of
Harvest Strategy



Improve Selectivity
and Bycatch
Reduction



Manage Measures
on Post-Capture
Handling ETP
Species



Management
Measures Ghost
Fishing



Monitoring Bycatch
Species



Improve Risk
Assessment



Continue and
Strengthen
CO-Management



Development
of Compliance
and Enforcement
Measures



Activity 1 Improvement of Stock Assessment

Task	Date of completion	
Validation of BSC database	June 2021	✓
Development of online BSC database	June 2021	✓
Conduct training for enumerators and co-management supervisors	June 2021	✓
Conduct training for data scientist on stock assessment	June 2021	✓
Conduct meeting with enumerators and co-management supervisors to evaluate the monthly LBSPR value	June 2021	✓
Scientist meeting for peer reviewing the result of stock assessment	June 2021	✓
Publish the new stock assessment to scientific journal	June 2021	✓



Activity 2 Development of Stock Rebuilding System

Task	Date of completion	
Mapping the BSC stock status throughout the Java Sea	September 2021	✓
Mapping the potential area of restocking	September 2021	✓
Conduct the restocking in the location(s) determined by the mapping results	December 2021	✓
Workshop on mariculture development and livelihood diversification	December 2021	✓
Monitoring and evaluation of the BSC stock status after restocking	June 2022	✓

Sustainable
Traceable



Activity 3 Development of Conservation Area

Task	Date of completion
Mapping the habitat and nursery ground	December 2021
Develop the conservation area and zoning plan (close and open area) at the pilot site	March 2022
Monitoring and evaluation of the BSC stock status after conservation measures	June 2022



Activity 4 Improvement of Harvest Strategy

Task	Date of completion
Review the existing harvest strategy in Indonesia and in other countries	June 2021
Pilot study testing for the implementation of harvest strategy in 3 sites (Rembang, Pamekasan, Konawe Selatan)	March 2022
Workshops on evaluating the implementation of harvest strategy at pilot study sites	June 2022



Activity 5 Implementation of Harvest Strategy

Task	Date of completion
Registration of vessels and fishing gears	June 2021
Conduct meeting to socialize Harvest control rule	June 2021
Establish the regulation at village level	June 2021
Create posters/flyers about GTK5! (capture and return within 5 minutes)	June 2021
Building crab apartment	June 2021
Conduct training for fishermen on handling egg berried female	June 2021
Monitoring and evaluating the fulfillment of GTK5! logbook	December 2022

Sustainable
Traceable



Activity 6

Improve Selectivity of Fishing Gear and Bycatch Reduction

Task	Date of completion
Conduct meeting with BBPI Semarang related to the development of trap with escape vents and net with improved mesh size	March 2021 ✓
Procurement of trap with escape vents 1500 units	March 2021
Procurement of net with improved mesh size 300 units	March 2021 ✓
Conduct meeting with fisher community in 3 sites (Rembang, Pamekasan, Konawe Selatan) and handover the trap with escape vents 500 units and net with improved mesh size 100 units for each sites	March 2021 ✓
Collect data for the use of trap with escape vents and net with improved mesh size in the 3 sites by enumerators (BSC and bycatch captured)	March 2021 ✓
Analyze the trap with escape vents and net with improved mesh size data (BSC and bycatch captured) for each sites	June 2021
Conduct meeting with BBPI Semarang and MMAF regarding the results of implementation of trap with escape vents and net with improved mesh size	June 2021 ✓



Activity 7

Management Measures on Post-Captured Handling of ETP Species

Task	Date of completion
Conduct data collection for bycatch and ETP species in 7 locations (Pemalang, Pati, Rembang, Gresik, Pamekasan, Pangkajene dan Kepulauan, Konawe Selatan)	September 2021 ✓
Conduct training/workshop for fishermen regarding the ETP species and its post-capture handling in 3 provinces (Central Java, East Java, Southeast Sulawesi)	June 2021 ✓
Create and install the poster/flyer in 7 locations (Pemalang, Pati, Rembang, Gresik, Pamekasan, Pangkajene dan Kepulauan, Konawe Selatan)	June 2021 ✓
Create and install the post-captured handling poster/flyer in 7 locations (Pemalang, Pati, Rembang, Gresik, Pamekasan, Pangkajene dan Kepulauan, Konawe Selatan)	June 2021 ✓
Create a report related to the implementation of the action (training and poster installation) to evaluate the post-capture handling of ETP Species	September 2021 ✓

Sustainable
Traceable



Activity 8 Management Measures on Ghost Fishing

Task	Date of completion	
Conduct meeting with fisher community in 3 provinces (Central Java, East Java, Southeast Sulawesi) related to ghost fishing	June 2021	✓
Create and install the poster/flyer in 7 locations (Pemalang, Pati, Rembang, Gresik, Pamekasan, Pangkajene dan Kepulauan, Konawe Selatan)	June 2021	✓
Provides services to identify the damaged fishing gear found by fishermen, including the identification of type of fishing gear, type of material, and weight (by Community Organizers and Enumerators)	June 2021	✓
Create a report related to the implementation of the action (meeting and poster installation) to evaluate the action related to ghost fishing	September 2021	✓



Activity 9 Monitoring of Bycatch Species

Task	Date of completion	
Collect data of bycatch in 7 locations (Pemalang, Pati, Rembang, Gresik, Pamekasan, Pangkajene dan Kepulauan, Konawe Selatan)	March 2021	✓
Analyze bycatch data from 7 locations (Pemalang, Pati, Rembang, Gresik, Pamekasan, Pangkajene dan Kepulauan, Konawe Selatan)	June 2021	✓
Conduct meeting in the framework of data management committee in 3 provinces (Central Java, East Java, Southeast Sulawesi) to share the bycatch analysis results	June 2021	✓



Activity 10 Improve Risk Assessment

Task	Date of completion	
Collect data related to blue swimming crab biology and bycatch in 7 locations (Pemalang, Pati, Rembang, Gresik, Pamekasan, Pangkajene dan Kepulauan, Konawe Selatan)	September 2022	
Conduct meeting with Panrita to collaboration in Vessel Tracking System Installations in 3 provinces (Central Java, East Java, Southeast Sulawesi)	March 2021	✓
Procurement of TREKfish 15 units	March 2021	✓
Conduct training/workshop to fisher community in 3 sites (Rembang, Pamekasan, Pamandati) related to implementation of Vessel Tracking System (VTS)	June 2021	✓
Installations of Vessel Tracking System in 5 vessel in each provinces (Central Java, East Java, Southeast Sulawesi)	June 2021	✓
Analyze data recorded by TREKfish monthly	June 2022	
Create 6 month and annual report of the data recorded by TREKfish	September 2022	
Provides grants to the students to conduct research related to ecosystem in blue swimming crab fisheries, including the coral reefs, seagrass, and mangrove	June 2021	✓
Conduct risk assessment	September 2022	
Adjustments in risk assessment to cover other ecosystem components such as impact on trophic structure of ecosystem through environmental DNA, etc.	September 2022	

Sustainable
Traceable



Activity 11 Continue and Strengthen the CO-Management

Task	Date of completion
Conduct meeting to follow up the Governor Decree draft on BSC fishery management	September 2022
Establish the BSC fishery management council (East Java)	September 2022
Conduct a bi-annual meeting with the blue swimming fishery management council	September 2022
Conduct a quarterly meeting with the data management committee	September 2022
Conduct meeting to evaluate the implementation of GTK5 in Rembang, Pamekasan and Pamandati village	September 2022
Establish the FMA 712 steering committee	September 2022
Conduct meeting to evaluate the implementation of procurement of trap with escape vents	September 2022
Conduct meeting related to stock rebuilding activities	September 2022
Conduct FGD related to establishment of Village Regulation	September 2022



Activity 12 Development of Compliance and Enforcement Measures

Task	Date of completion
Create the guidelines for responsible fisheries practices for the blue swimming crab commodity	June 2022
Conduct meeting to socialize guideline for responsible fisheries practices for the blue swimming crab commodity	June 2022
Distribute the fisheries guidelines to each miniplant and fishermen in the co-management location	June 2022
Create and distribute the GTK5 logbook to fishermen	June 2022
Create and distribute the Ghost Fishing logbook to fishermen	June 2022
Create and distribute the ETP logbook to fishermen	June 2022
Create logbook landing report	June 2022
Conduct training on the fulfillment of landing report logbook	June 2022
Conduct FGD related to development of enforcement mechanism plan	June 2022

Sustainable
Traceable

Crab Apartement

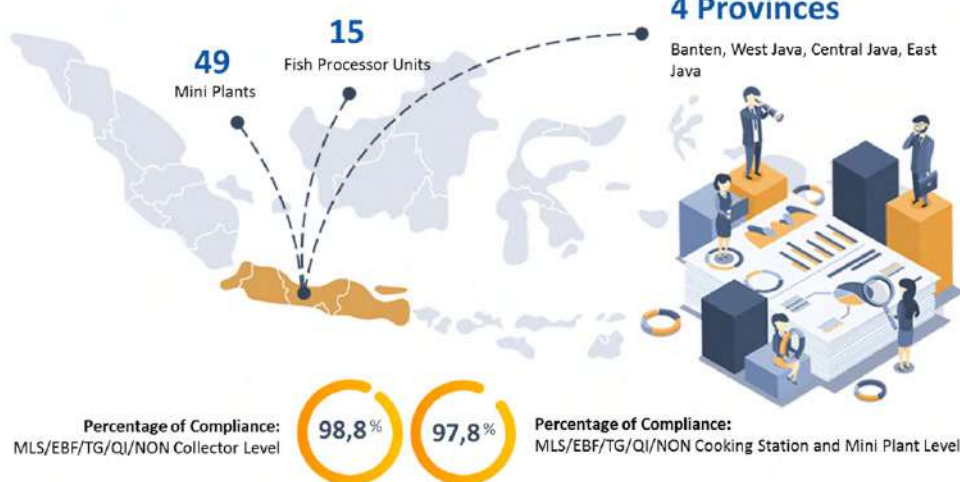
Make opportunity to release eggs and for sizes <10 cm the opportunity to grow. After the eggs are released and the crab can be harvested by fisherman

Location :

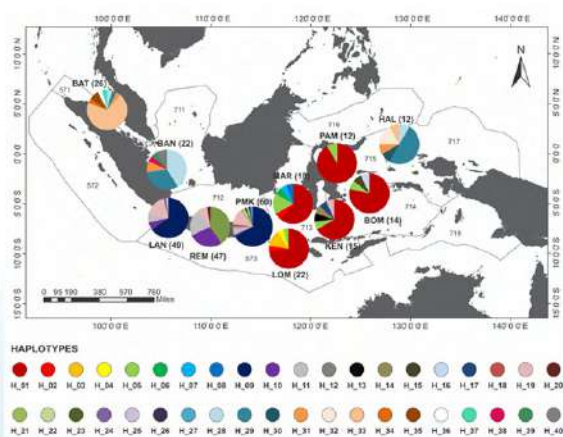
Ds. Pagagan, Pamekasan
Ds. Gedongmulyo, Rembang



Control Document Audit System (CDAS)



Genetic Distribution of BSC Population



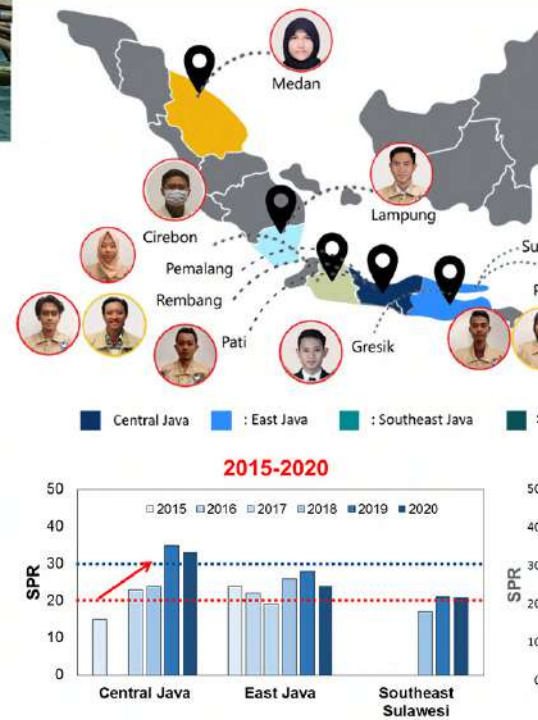
APRI Action Plan 2021-2024



P3. Effective Management

- Legal/customary framework (3.1.1)
- Consultation, roles & responsibilities (3.1.2)
- Governance/policy long-term objectives (3.1.3)
- Fishery-specific objectives (3.2.1)
- Decision-making processes (3.2.2)
- Compliance & enforcement (3.2.3)
- Monitoring & management performance evaluation (3.2.4)

APRI Data Collection Program



APRI Youth Innovation

1st APRI YOUTH INNOVATION

10 TIM TERPILIH DARI 8 UNIVERSITAS DI INDONESIA





ASOSIASI PENGELOLAAN
RAJUNGAN INDONESIA

Fishery Improvement Project (FIP) 2021



APRI FOCUS



Traceability System

Pilot traceability systems through control document



Stock Assessment & Enhancement

To support Stock Assessment Programs in the Java Sea by applying SPR in addition to conventional stock assessment and stock enhancement



Co-Management

Complete the National Fishery Management Framework, formalize a steering committee for WPP-712 (Java Sea)



Environmentally Friendly Fishing Gear

Review and implemented environmentally friendly fishing gear in BSC fisheries



Enforcement & Compliance

To improve enforcement and compliance of fishery policies through assessing supply chain



Empowerment

Empowerment and organization of fisher communities

FIP AT A GLANCE

ENVIRONMENTAL Addressing 28 of 28 indicators

Current Status:



Starting Evaluation: January 01, 2012



Progress Rating

A

ADVANCED PROGRESS

Actions Complete



Complete Incomplete

Next Update Due

MAR 2022

Target End Date DEC 2022

Additional Impacts:

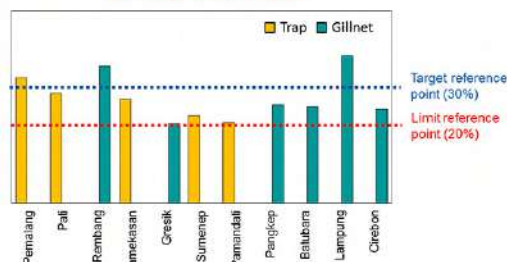
TRACEABILITY BSC ECOSYSTEM ROCKWATER OTHER

<https://fisheryprogress.org/>



South Sulawesi : Medan : Lampung : Cirebon

SPR for Each Sites



3rd APRI YOUTH INNOVATION

5 TIM TERPILIH DARI
3 UNIVERSITAS DI INDONESIA

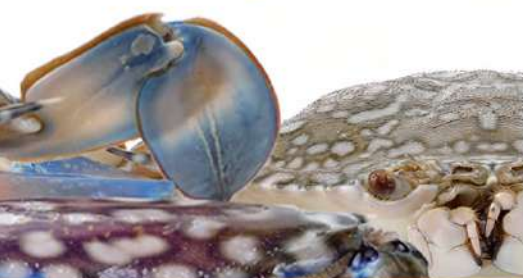


15 PROPOSAL

5 TIM TERPILIH

- Irsyal Ardiansyah : Ekosistem Terumbu Karang
- Rifadillah Hisammuddin : Ekosistem Lamun
- Pahad Maulana : By Catch Belangkas
- Nova Dewi Syafitri Syam's : Ekosistem Mangrove
- Riqki Yoga Aprilianto : Ekosistem Mangrove

YOUTH INNOVATION
DARI
S DI INDONESIA



The FIP currently at SFP Stage 5 : Improvements on the Water – and **Progress Rating got A (Advanced Progress)**

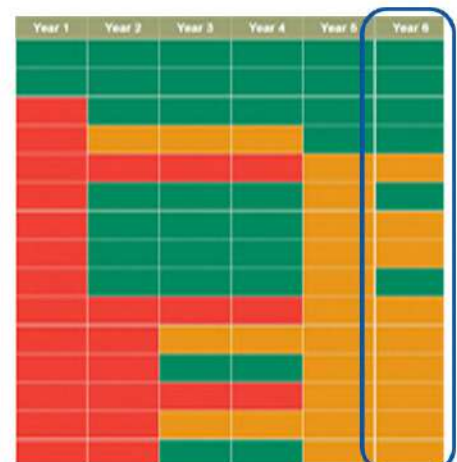
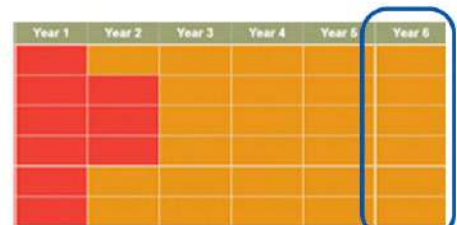
The blue swimming crab fisheries has been assessed in 2015 using the MSC's Fishery Assessment Methodology (V2.0). Current score **SG<72 MSC's standard for sustainable blue**

P1. Sustainable Fish Stock

- Stock status outcome (1.1.1)
- Stock rebuilding outcome (1.1.2)
- Harvest strategy (1.2.1)
- Harvest control rules & tools (1.2.2)
- Harvest strategy information & monitoring (1.2.3)
- Assessment of stock status (1.2.4)

P2. Minimizing Environmental

- Primary species outcome (2.1.1)
- Primary species management (2.1.2)
- Primary species information (2.1.3)
- Secondary species outcome (2.2.1)
- Secondary species management (2.2.2)
- Secondary species information (2.2.3)
- ETP species outcome (2.3.1)
- ETP species management (2.3.2)
- ETP species information (2.3.3)
- Habitat outcome (2.4.1)
- Habitat management (2.4.2)
- Habitat information (2.4.3)
- Ecosystem outcome (2.5.1)
- Ecosystem management (2.5.2)
- Ecosystem information (2.5.3)





Asosiasi Pengelolaan Rajungan Indonesia
Jl. Dukuh Kupang Timur XI No. 33, Surabaya, East Java, Indonesia

 : rajunganindonesia@gmail.com     | [@rajunganindonesia](https://www.instagram.com/rajunganindonesia) |  www.apri.or.id