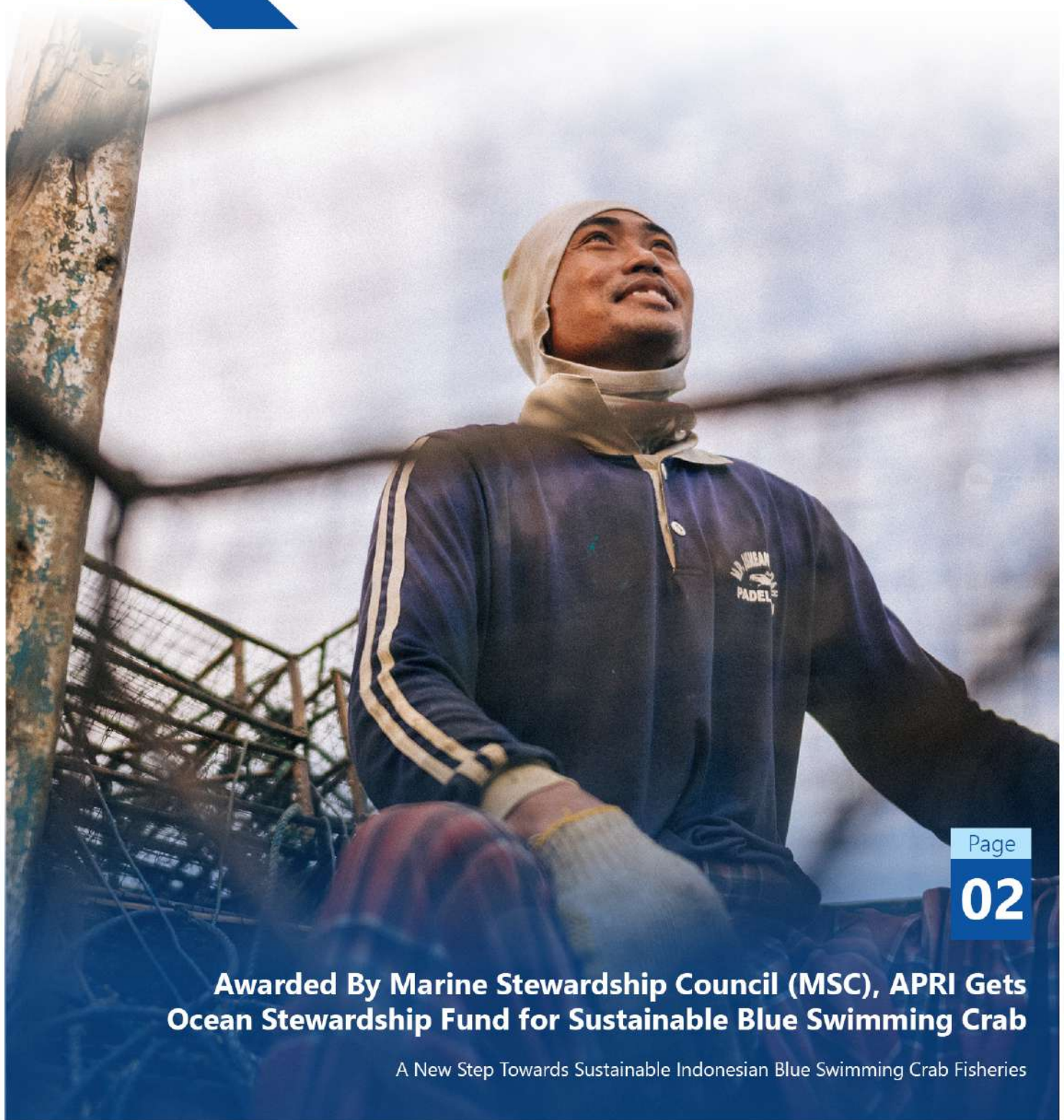




April - June 2021 | 5(2) : 2021

# Quarterly Bulletin

[www.apri.or.id](http://www.apri.or.id)



Page

02

**Awarded By Marine Stewardship Council (MSC), APRI Gets  
Ocean Stewardship Fund for Sustainable Blue Swimming Crab**

A New Step Towards Sustainable Indonesian Blue Swimming Crab Fisheries



# Quarterly Bulletin

[www.apri.or.id](http://www.apri.or.id)



Foto : Muh Cardin/Pamandati

## About Apri

APRI dan semua anggota mengkampanyekan keberlanjutan rajungan untuk mendukung rantai pasok yang efektif, meningkatkan rekrutmen rajungan melalui peningkatan stok, berkolaborasi dengan perguruan tinggi untuk mendukung penelitian ilmiah, serta mendukung Kementerian Kelautan dan Perikanan untuk mengembangkan Rencana Pengelolaan Perikanan Nasional dan bekerja sama dengan komunitas nelayan untuk membangun pengelolaan perikanan berbasis masyarakat. Semua kegiatan proyek dikelola dalam Proyek Peningkatan Perikanan (FIP), yang ditentukan dalam 6 tahapan FIP. Proyek Peningkatan Perikanan akan menciptakan berkelanjutan terhadap rantai pasokan, sumber daya rajungan dan juga ke ekosistem tempat rajungan ditangkap.

## APRI Members :



## First Quarterly Meeting (Q1) in March 2021: For Sustainable Crab Fisheries

In March 2021, the Asosiasi Pengelolaan Rajungan Indonesia (APRI) held a Quarterly Meeting or commonly known as Q1. This routine activity every three months is attended by all members to maintain a commitment to sustainable crab fisheries management. The agenda for these activities is related to socialization related to APRI Drainage for the period 2021-2022, APRI Sustainable Funding, Presentation on the Development of the FIP Action Plan. The activity continued with the symbolic handing over of APRI membership certificates from the General Chair to PT PSI (PHILLIPS SEAFOODS INDONESIA) represented by Mr. Nana as a form of APRI appreciation for members who continue to support the sustainability of crab fisheries in Indonesia. PT PSI itself is a pioneer of crab fisheries in Indonesia. "PT PSI and of course other APRI members hope that the crab business will continue to exist because the crab fishery is a commodity that is a source of foreign exchange income for these fishermen and others," said Pak Nanang.

## APRI Attends the Directorate General's Technical Working Meeting Catch Fishery 2021

APRI attended the "Technical Working Meeting of the Directorate General of Capture Fisheries 2021" which was held openly online on 6-9 April 2021. The activity was related to the synergy in realizing the Rebound KKP in increasing capture fisheries PNPB and fishermen's welfare.





## Bycatch Research Coordination Meeting Marine Mammals in Crab Fisheries In Madura

15 APRIL 2021

The Marine Mammal Bycatch Research Coordination Meeting on Crab Fisheries in Madura was held on Thursday, April 15 2021, APRI, UTM, and Cetasi held a coordination meeting related to technical preparation of research in indicators of minimizing environmental impacts that the crab fishery does not interfere with marine mammal life.



## ASEAN FIP Manager Meeting

Dr. Hawis Madduppa (APRI) attended the event as well as conveyed some information related to the FIP of crabs in Indonesia. This activity aims to work together in finding solutions to face challenges in fisheries management. This activity lasts for two days on 7-9 April 2021



## MMPA KKP TEAM visit and APRI to the Arrest Location Crab in Cirebon

The field visit was carried out on 20-21 April 2021 in Gebang Mekar village and Bondet village, Cirebon Regency in the context of fulfilling regulations on exporting fishery products to the United States (US), especially the Marine Mammal Protection Act (MMPA) – List Foreign Fisheries. This activity aims to propose comparability finding related to MMPA.



## FGD Implementation Crab Harvest Strategy.

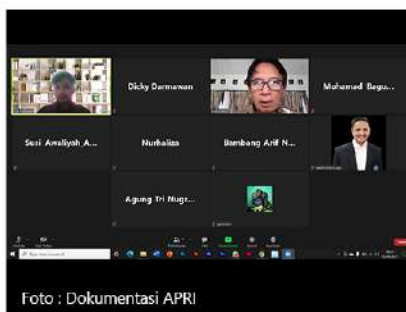
FGD on Consolidation of Crab Fisheries Data as Implementation of the Crab Harvest Strategy. In order to follow up the activities of the GEF-5 grant. APRI participated in FGD activities related to the preparation of the flow, system, and data collection of crabs by APRI in WPP 712. This activity was represented by Dr. Ayu Ervinia and Azhar Slamet.



## Awarded By Marine Stewardship Council (MSC), APRI Gets Ocean Stewardship Fund for Sustainable Blue Swimming Crab

APRI is funded by the "Ocean Stewardship Fund" by MSC. Fisheries improvement project (FIP) over several years led by APRI with progress now verified through the **In-Transition to MSC Full Assessment Program**. "The Ocean Stewardship Fund will give us the opportunity to continue to advance the sustainability of the crab fishery. We will be able to collaborate with scientists to conduct research that will support healthy oceans," said Dr. Hawis Madduppa as Executive Director of APRI





## APRI Coordination Meeting with PANRITA Regarding Work Programs Same with VTS (Vessel Tracking System)

Prof. Indra Jaya as a team from PANRITA affiliated with the Bogor Agricultural University (IPB) who was present at the coordination meeting explained the trekfish working system with improved technology by making it easier to use. APRI's efforts to always develop crab fisheries in Indonesia have also received support from MSC through the "Ocean Stewardship Fund" with this support, hopefully the FIP program can continue to be carried out. Through TREKFish, the movement of fishing boats and crab catch areas can be recorded.



## Stakeholder Meeting Fisheries Interest East Java Province

Thursday, June 3, 2021, a meeting was held related to fisheries management in East Java Province, starting from the East Java DKP Government Agencies and Regency DKP as well as APRI and Brawijaya University, UNAIR, and UTM as well as small crab business actors (UPI), BKIPM Surabaya, etc. This activity is a form of harmonization and collaboration from all stakeholders for sustainable crabs in East Java Province.



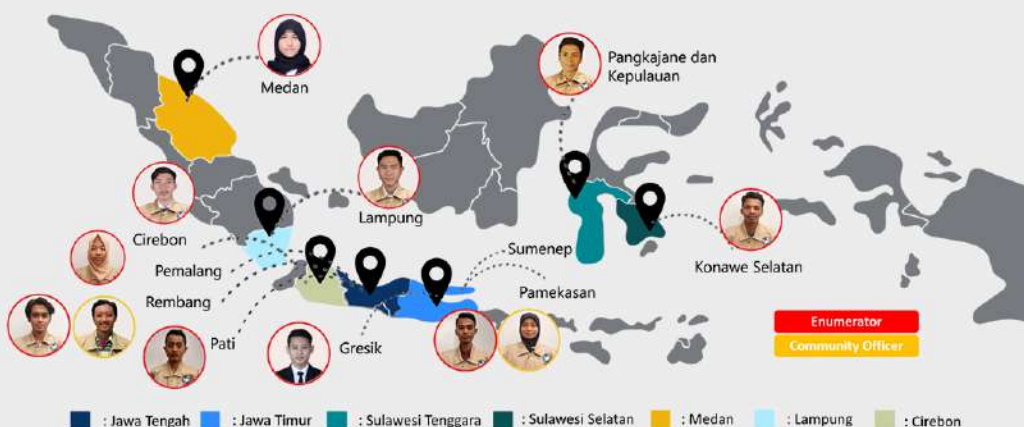
## Crab Management Plan Fishery Meeting (RPP)

APRI attended meetings related to the crab fishery management plan (RPP) by the DJPT-KKP and supported by UNDP.

The activity which was held for two days on 7-8 June 2021 and continued on 17 June was attended by APRI Executive Director Dr. Hawis Madduppa with Dr. Ayu Ervinia.

## STOCK ASSESSMENT

### Spatial Distribution of Crab Sampling

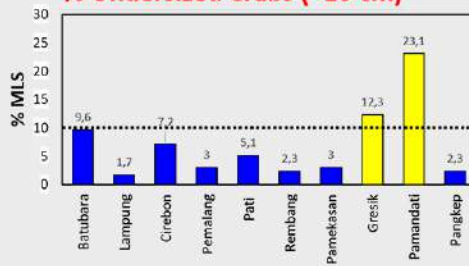


## Presentase MLS and EBF

Total Crab Sample = 34664

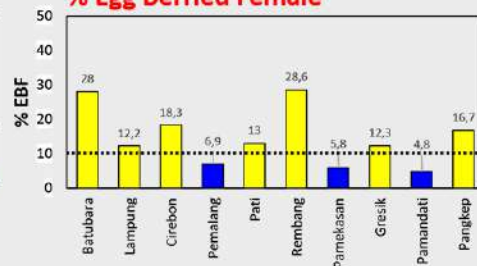
### A. MLS (Minimum Legal Size)

#### % Undersized Crabs (<10 cm)



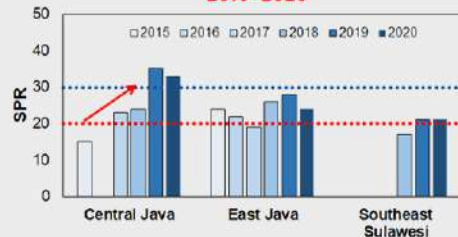
### B. EBF (Egg Berried Female)

#### % Egg Berried Female

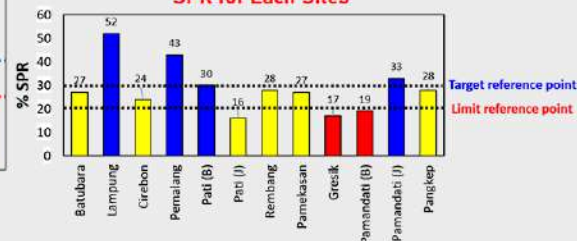


## Spawning Potential Ratio (SPR)

2015-2020



### SPR for Each Sites



- Many small crabs (<10 cm) are still caught in Gresik and Pamandati.
- Percentage of crab laying eggs caught still tends to be high >10%
- The SPR value of the crab at the data collection location has reached the limit reference point (SPR20%) and target reference point (SPR30%), except in Gresik and Pamandati.

\*Ayu Ervinia Data Analyst APRI January - May 2021





## FISHERY IMPROVEMENT PROGRAM (FIP)

The organization APRI - whose members include over 30 seafood industry businesses and processors - covers more than 85% of purchased crab in Indonesia. All members involved are working to promote not only sustainable crab harvest, but a sustainable supply chain as well. The FIP aims to support scientific research through collaborations with universities, to develop a national Fishery Management plan through a partnership with the Ministry of Marine Affairs and Fisheries, and to establish community based fishery management by working with local fishing communities. The FIP is meant to have a lasting impact on the sustainability of the fishery's supply chain, on blue swimming crab resources, and also on the ecosystem where the species is harvested.



## Indonesia FIP Status Report



### FIP Objective(s)

- Work plan and transition Indonesia Blue Swimming Crab Fisheries to MSC full assessment within the prescribed 3-years
- Change practices (no take of small crabs/juveniles, no take of eggbearing females), increase the stocks, develop policies that protect and sustain crabs (including protection of nursery ground, spawning area) by end of December 2022
- Develop a management plan for Indonesian blue swimming crab that includes community resources management that protects nursery ground; produce a control document by end of December 2018
- Implement FIP workplan that includes development of the management plan, community-based management, communication and awareness, nursery and spawning grounds protection projects, as well as a hatchery project by end of December 2018

The FIP currently at **SFP Stage 5 : Improvements on the Water** – and Progress Rating got A (Advanced Progress)

The blue swimming crab fisheries has been assessed in 2015 using the MSC's Fishery Assessment Methodology (V2.0). **Current score SG<72** MSC's standard for sustainable blue swimming crab fisheries

The blue swimming crab fisheries has been assessed using the Monterey Bay Aquarium's Seafood Watch Criteria of capture Fisheries (v2.0)

## APRI BOARD

### Supervisory Board :

Chief Supervisor : Mohammad Novi Saputro  
Member : Yoga Sadana  
Member : Ary Syaiful Bachri

Chairman : Kuncoro Catur Nugroho  
Treasurer : Wita Setioko  
General Secretary : Kuncoro Catur Nugroho\*

### FIP Organization (Fishery Improvement Project) :

Executive Director : Dr. Hawis Madduppa, S.Pi, M.Si.  
General Manager : Bambang Arif Nugraha  
Project Support I : Bunga M. Tarigan (WPP 711)  
Project Support II : Waanto (WPP 712)  
Project Support III : Hendro Wibowo (WPP 713, 714, 718)

### Staff

Office & Data Management - Susi Awaliyah  
Fishery progress & Public Relations - Mohamad Bagus Satria  
Science & Data Analyst - Ayu Ervinia  
CO-Management & FIP program - Azhar Slamet  
Public Awareness & Media Communication - Dicky Darmawan

### 1. Sustainable Fish Stock

- Stock status outcome (1.1.1)
- Stock rebuilding outcome (1.1.2)
- Harvest strategy (1.2.1)
- Harvest control rules & tools (1.2.2)
- Harvest strategy information & monitoring (1.2.3)
- Assessment of stock status (1.2.4)

### 2. Minimizing Environmental Impact

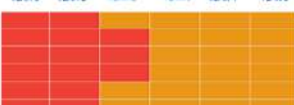
- Primary species outcome (2.1.1)
- Primary species management (2.1.2)
- Primary species information (2.1.3)
- Secondary species outcome (2.2.1)
- Secondary species management (2.2.2)
- Secondary species information (2.2.3)
- ETP species outcome (2.3.1)
- ETP species management (2.3.2)
- ETP species information (2.3.3)
- Habitat outcome (2.4.1)
- Habitat management (2.4.2)
- Habitat information (2.4.3)
- Ecosystem outcome (2.5.1)
- Ecosystem management (2.5.2)
- Ecosystem information (2.5.3)

### 3. Effective Management

- Legal/customary framework (3.1.1)
- Consultation, roles & responsibilities (3.1.2)
- Governance/policy long-term objectives (3.1.3)
- Fishery-specific objectives (3.2.1) <60
- Decision-making processes (3.2.2)
- Compliance & enforcement (3.2.3)
- Monitoring & management performance evaluation

Score Range : <60 60-75 60+

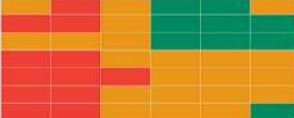
YEAR 0 YEAR 1 YEAR 2 YEAR 3 YEAR 4 YEAR 5



YEAR 0 YEAR 1 YEAR 2 YEAR 3 YEAR 4 YEAR 5



YEAR 0 YEAR 1 YEAR 2 YEAR 3 YEAR 4 YEAR 5



FISHERY  
PROGRESS.ORG

Terima Kasih Kepada :

